



CANARM[®]

AgSystems[™]



DAIRY

Products



agsales@canarm.ca
www.canarm.com

FAROMOR
A CANARM COMPANY

 **CANADA BEST
MANAGED
COMPANIES**

Platinum
member

FREESTALLS

Designed for Superior Cow Comfort!

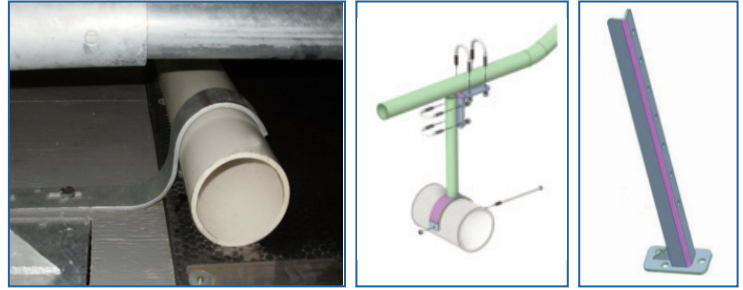
Over 20 DIFFERENT FREESTALL STYLES CUSTOMIZED! *Heifer freestalls also available.*

SLEEVE MOUNT FREESTALLS



- Adjustable height.
- Hot dipped galvanized, 3 1/2" post.
- Cow friendly floating loop.
- Easy installation.
- Available in 79", 88", & 94" long loops.

BRISKET BRACKETS



EEZY LUNGE FLOOR MOUNT FREESTALLS



- Excellent front and side lunge for increased cow mobility.
- Heavy duty hot dipped galvanized floor mount.
- Stall profile for superior cow comfort.
- 79", 88", and 94" long loops to accommodate platforms of all sizes.
- Only 1 post required for every 4 stalls.

STANDARD FREESTALLS



- Freestalls made of heavy duty 2 3/8"OD tube and hot dipped galvanized for longevity.
- Heavy duty 3 1/2" post with gusset for increased strength.
- Available in 79.5", 88" & 94" lengths.

COMFY CURVE HEADRAIL



- Helps cows to stand and lay straight.
- Cleaner cows.
- Less cow contact with headrail.

SAND STALLS



- Works well with sand groomers.

BEAM MOUNT STALLS



- Fully adjustable width and height.
- Less concrete required.

HEADRAIL CLAMP



- Heavy-duty headrail clamp significantly increases stall strength and stability.

FEED FRONTS

Designed for cow comfort & ease of use in any type of barn!

COW OPEN TOP SELF LOCKING FEED FRONTS



- Options of 24" or 30" per cow.
- Available with adjustable uprights.

IMPROVED DESIGN MAKES IT THE
QUIETEST
& EASIEST TO OPERATE!

- Able to open bottom for cow safety.
- Available in 8', 10' or 12' lengths.

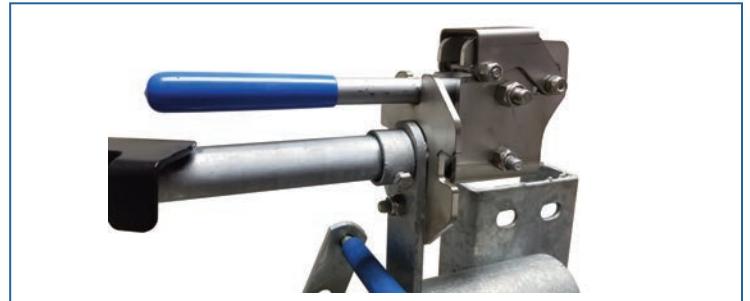
CALF ADJUSTABLE OPEN TOP SELF LOCKING FEED FRONTS



- Easy and quiet to operate.
- Galvanized.
- Individual panic release buttons on each headlock.
- Lock all your calves down at once or individually to easily identify & treat them in one location.
- Available in 10' size.
- Custom sizes available.



Proudly
Made in Canada



- New cow tamper proof handle.
- Designed for easy operator use.
- Can be installed on previous style of self lock feed fronts.

ANGLED FEED FRONTS



- Available in clamp or welded hot dipped galvanized.
- Sizes available for calves to mature cows.

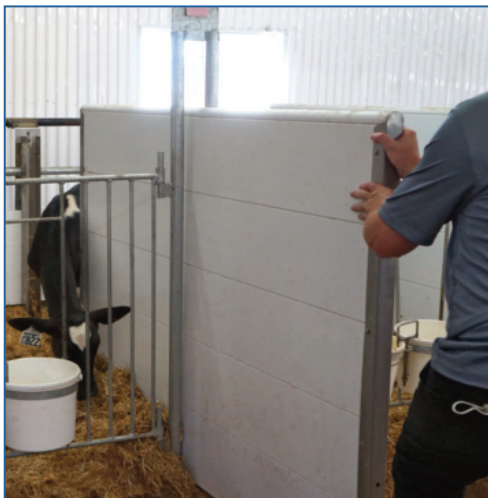


- Upright clamps allow you to change neck opening sizes.

COMFY CALF SUITES

The Trusted Solution for Raising Calves Indoors.

Today, Comfy Calf Suites are being used in over **6,000 dairies worldwide!**



Convert from single to group penning quicker and easier than any other pen on the market.

Various sizes and options to suit your requirements.

Save on labour and keep an eye of the future of your herd! Calves are easy to see and access.

LET COMFY CALF SUITES IMPROVE THE HEALTH & WELFARE OF YOUR CALVES.

Comfy Calf Suite Advantages

- Feed your calves inside.
- Better air quality improves the health of your calves.
- Dividers remove quickly & easily making cleaning simple.
- Calves are easier to see compared to enclosed shelters.
- Plastic dividers isolate each calf, keeping your calves healthy.
- Removal of dividers allows for group penning as calves mature.
- Side panels available with grills, cow can see through.

Standard sizes (Custom sizes also available)

On center pen widths: 36" (91.4 cm), 42" (106.7 cm), 48" (121.9 cm)
Pen lengths: 72" (182.9cm), 96" (243.8cm)
Panel heights: 41" (104.1cm), 51" (129.5cm)

For more information visit canarm.com/comfy-calvesuites

COMFY CALF Suites

"The Comfy Calf Suites are light weight, easy to use and clean. Easy to change accessories around and change to group housing as they calves age. Our calf health has improved since installing the Canarm AgSystems pens."

– Andrea Brossard, 62 head calf barn, Beaver Dam Wisconsin



Canarm AgSystems offers a complete line of cost effective gates hot dipped galvanized inside and out, giving them longevity and a clean appearance for years to come. Adjustable in length, they can be used for odd sized openings in any type of barn for a variety of applications.

Features

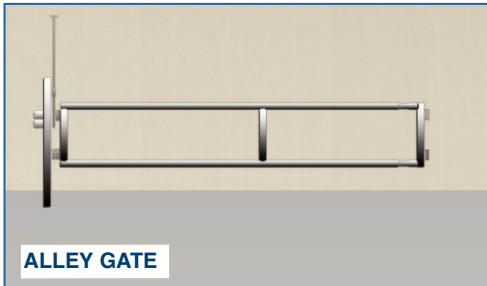
- Exclusive clamp-on ends with option of trimming gate to exact.
- Telescopic option.
- Various lengths available.
- 2 adjustable hinges.
- Adjustable length size required on site.
- Heavy-duty construction ensures years of trouble free service.
- Hot dipped galvanized for increased durability.

Gate Options

- 4 & 5 Bar Gates
- Cross Alley 1-Bar Gates
- 2-Bar Alley Gates
- Flip-over Gates
- Parlour Gates
- Spring Loaded One Arm Gates
- Scrape Alley Gates
- Clean Walk Gates
- Finger Gates
- Calf Gates

Latch Options

- Heavy duty self-catching latch
- Clamp-on spring loaded latch
- Chain latch
- Double pin



2020 3 AND 4 BAR BOLT TOGETHER GATES AND FENCE

Features

- Weld free 3 and 4 bar fence and gate system.
- Easy install no weld fence and gate system.
- 2" o.d. main frames.
- 3.5" heavy square posts.
- Easy slide in ends means no cutting on site.

**WELD FREE
FENCE &
GATE SYSTEM**



WATERERS

Canarm's line of water source solutions.

ROUND BOTTOM TROUGHS FOR EASY CLEANING



**WALL
MOUNT**



**FLOOR
MOUNT**

- Easily tip the trough to refresh the water supply.
- Floor or wall mount stainless troughs.
- Available in stainless construction.
- Standard and custom sizes available.
- Hi-flo float system with steel guard to prevent damage.

FACT !

Recent studies have shown that there is less bacterial growth on stainless steel water tanks.

POLY WATERERS



P25 POLY WATERER

- Long lasting, durable poly cabinet resists corrosion.
- Thicker cabinet wall for a superior R value (R18).
- Stainless steel bowl construction for long life.
- Bowl has rounded corners that provide a durable yet smooth surface that is gentle on animals.



P50/P100 POLY WATERER

- Mounting corners molded inside the cabinet make for easy installation & removal.
- Comes with a thermostatically controlled heating element.
- Electrical box hinges open from the inside for easy access to components.
- Adjustable thermostat.

HEATED LIVESTOCK WATERERS



Available models: H50, HL50, H100 & H200

- Strong, double wall design.
- R15 insulation value one of the highest in the industry.
- 4X Corrosion Resistant
- 4 models available to suit your needs.
- 2" of injected polyurethane insulation.
- Energy efficient.
- Hinged top for easy cleaning.

ENERGY FREE COVERED POLY WATERERS

EF-88C



- Made from a heavy duty, impact resistant polyethylene.
- One shot roto-molded with injected foam insulation.

EF-40C



- Insulated cover with floating ball to keep water from freezing.
- Available in a single (40 head) or double (88 head) options.



ENERGY FREE INSULATED POLY + SS TROUGH WATERER

EF-225



- Made from a heavy duty, impact resistant polyethylene.
- One shot roto-molded with injected foam insulation.

EF-225SS



- Easy access to clean and maintain the water.
- Large opening for multiple animals to drink at one time.

TIPPABLE SSH20 Single Head Waterer



- New tippable design for easy emptying.
- Suitable for all age groups.
- Float controlled water flow.
- Made from durable stainless steel.
- Easy to clean – will not harbor bacteria.
- An easy way to provide multiple watering locations throughout the barn & at the feed bunk.
- Universal mount.

NATURAL VENTILATION

Keeping your animals cool & healthy.



MAX AIR CURTAIN SYSTEM

- Single Curtain up to 14 ft. high.
- Optional pipe drive operating system eliminates main cable and drop pulleys in standard operating systems.
- Eliminates mid wall header required for split curtain systems.
- Can be operated manually or automatically.



ROLL-A-WAY (RAW) CURTAIN SYSTEM

- Single curtain up to 10 ft. high.
- Combined with a bottom roll up curtain for larger wall openings.
- Available with pipe drive operating hardware.
- Can be operated manually or automatically.
- Wind protection with nylon cord, pipe or straps.



EZ ROLL CURTAIN SYSTEM

- Can be used as a single curtain system or as a split curtain for larger openings.
- Re-designed drive units have a cable lift system that ensures a smooth and even roll up at both ends of the curtain section.
- End and centre mount drives are available.
- Can be operated manually or automatically.



BOTTOM ROLL-UP (BRU) CURTAIN SYSTEM

- Single Curtain up to 8' high.
- Center Tube option for larger openings.
- Can be combined for a split curtain system.
- Can be used as an end wall curtain for additional hot weather air intake.
- Can be operated manually or automatically
- Wind protection with nylon cord, pipe or straps.



STANDARD TOP DOWN (TD) CURTAIN SYSTEM

- Available in 3' - 8' heights.
- Fastened at the bottom and lower from the top on a cable pulley system.
- Fully adjustable end pockets for easy future repair.
- Can be operated manually or automatically
- Wind protection with nylon cord, pipe or straps.
- Ideally suited for overshot ridge applications.



VINYL ROLLER CURTAIN (VRC)

- Easy to wash material.
- Long life expectancy.
- Available in a variety of colours and sizes.
- Can be run by manual crank at one end of the unit or powered and controlled with a toggle switch located in a convenient area such as the operator pit the parlour and/or holding area.



Do your curtains or panels need a little TLC?

Curtains and panels break down over time from sunlight and weather conditions. If your system is showing a lot of wear and tear, make sure it gets the attention it needs before the busy season sets in.

Get in touch with us to have an professional, experienced Faromor service technician come care for your system. *Call us today at 1-800-260-5314.*

For replacement options visit canarm.com/faromor.



SOLARVU PANEL SYSTEMS

- Available in heights from 24" to 72"
- Aluminum frame with Lexan inserts
- Optional pipe drive hardware
- Can be operated manually or by automatic power drives connected to a thermostat.
- Feature a continuous rubber seal which allows for draft free closing of the panel and minimal heat loss in cold weather.



CLEARVU PANEL SYSTEMS

- Available in heights from 24" to 72"
- Aluminum frame with clear acrylic inserts
- Optional pipe drive operating hardware
- Can be operated manually or by automatic power drives connected to a thermostat.
- All hardware is stainless steel, aluminum or galvanized for longer life expectancy.



TRANSPARENT WALL VENT

- Made from an extruded aluminum frame and clear acrylic.
- Available in custom sizes.
- Available in custom hinge positions.
- Can be operated individually or in series with a variety of operating systems based on operator or animal movement on the inside of the building.
- Can be operated manually or by automatic power drives connected to a thermostat.
- Aluminum wall vents are pre-hinged with stainless steel hinges in a self-flashing outer frame.



CLEARVU HINGED PANEL SYSTEMS

- Available in heights from 24" to 72"
- Aluminum frame with clear acrylic inserts.
- Top hinged with rack and pinion operating hardware.
- Can be operated manually or by automatic power drives connected to a thermostat.
- All hardware is stainless steel, aluminum or galvanized for longer life expectancy.



FRP CHIMNEYS

- 24", 30" and 36" sizes.
- Fully insulated duct section.
- Plastic caps available in colours.
- Extendable for attic applications.
- Can be peak mounted or slope mounted.
- Available with optional Lexan skylight package.
- Available with optional attic ventilators for vaulted ceiling buildings.



SKYLIGHT SYSTEM

- Available standard for 2' and 3' openings.
- Custom sizes available.



SOLAR DOME

- 24", 36" and 48" sizes.
- Used as a "cover" for new or existing open ridges.
- Roof mounted flashing included to minimize snow penetration.

POWERED VENTILATION

From design to completion, we can do it all.



TUNNEL VENTILATION

We have the products you need to design a top quality tunnel ventilation system.



CROSS FLOW VENTILATION

We offer a full line of exhaust fans and fresh air inlets required to design a cross flow ventilation system.



DUAL VENTILATION

By combining natural and power ventilation we can design a system that gives you the best of both worlds.



FGC FIBERGLASS FANS

Heavy Duty Fiberglass Injection Molded Housing with performance enhancing cone. Designed with smooth inside and outside for improved cleaning.
Available in: 36" & 54"



72" MAX AIR PLUS

The MAX-AIR® PLUS is a superior output and high efficiency fiberglass exhaust fan. Produces UP TO 49,167 CFM. The thick fiberglass housing is strong, corrosion resistant and easy to clean.



FIBERGLASS FANS

The patented design provides excellent performance without a cone. Chop & Spray design with smooth inside for improved cleaning.



72" CYCLONE PLUS

In dairy barns, Cyclone Plus creates very high air velocity for animal cooling, insect control, drying of bedding and employee comfort.



54" PANEL FANS

New larger more rugged design. Strong, versatile and adjustable wall/post mount optional. Durable black powder coated finish. Comes with an ultra quiet and durable poly 3 paddle blade. Also available with stainless steel paddles.



PRF POLY ROUND FAN

The PRF Poly Round Fans are a strong, versatile wall/ceiling unit which includes mounts. Versatile design, hangs quickly and points anywhere. Along with its strong, powder coated steel guards, it has a durable poly wrapper, 36" diameter and 1/2 hp, 230 volt single or 3 phase motor.



SERCO HVLS FAN

Optimized 5 blade profile for low speed rotary airfoil application and near ground effect. Large air current depth - horizontal floor jet of 3-9 ft (1-3 m). Comes with standard black corrosion resistant anodized blades. Fan safety system includes guy wires and safety cable. High efficiency variable frequency drive (VFD).

LED HIGH BAY



HBLED-PT150W5000

- High efficiency – 150 lumens per watt
- IP65/4X certified
- Aluminum alloy heat sink
- 0-10V dimmable
- 39" (1M) loose wire cords for power supply and 0-10V dimming

ALL WEATHER LIGHTS



BL12RT

Retrofit 12" Ceiling Light

- 3 1/2"H x 12"W
- Max 1 x 200W E26 type bulb



BL04CWG

Ceiling / Wall Mount Light

- Clear Glass With Metal Guard
- 7 1/4"H x 4 1/2"W
- Max 1 x 100W A19 type bulb

4' LED 3000K 230V FIXTURE



LP848210-DB3K

- This unit is designed to replace traditional fluorescent T5 and T8 fixtures.
- IP66/4X certified.
- Material: PC housing, stainless steel clips, silicon perimeter gasket, aluminum heatsink, PC lens, Isolated LED driver.
- Aluminum heatsink and iron surrounded LED driver for maximum heat dissipation, prolonging the fixture lifespan.

LED VAPOR TIGHT LIGHT

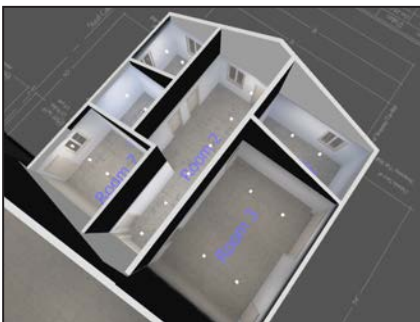


LP848220-DB5K

LP848230-DB5K

- This unit is designed to replace traditional fluorescent T5 and T8 fixtures.
- IP66/4X certified.
- Material: PC housing, stainless steel clips, silicon perimeter gasket, aluminum heatsink, PC lens, Isolated LED driver.
- Aluminum heatsink and iron surrounded LED driver for maximum heat dissipation, prolonging the fixture lifespan.

Ask us about Canarm's FREE lighting layout & design service!

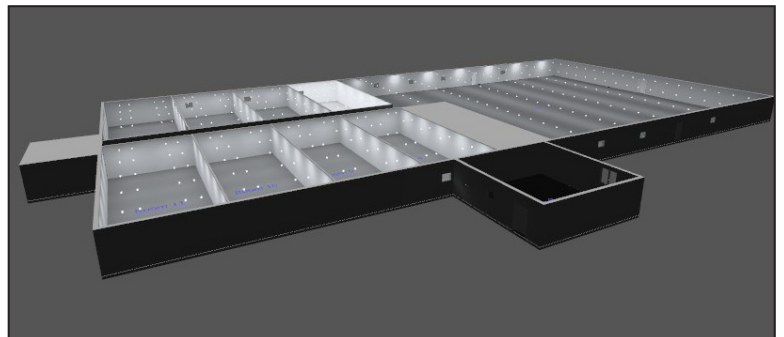


Ensure you get the right lighting & bulbs in your facility with our **FREE Lighting Layouts and Design Service**.

We use a Professional Sales & Presentation Tool to create a 3D Rendering of building with visuals of the lighting products installed.

We will also provide a detailed report with lighting graphs and total project wattage usage.

Email: agsales@canarm.ca for details.



DISINFECTANT MATS



- Patented Design: effective transfer of liquid disinfectant onto footwear through a durable, permeable cover membrane, leakproof.
- Improve your building Bio-Security.
- Easy to clean: simply wash in the same way as a regular doormat, as frequently as required and then let it dry.
- Packaged 5 per shelf display box.
- Each Mat is 23.6" x 35.4" x 1.6" (60cm x 90cm x 4cm).

BOOT WASH



- Durable all stainless steel construction.
- 4 high pressure stainless jet nozzles.
- Easy installation - comes fully assembled
- Fits all boot sizes.
- Self cleaning - doesn't hold any foreign materials.
- Connects to wall with an open bottom to allow waste water to flow away.
- Stainless steel cover contains water as it cleans.

 **CANARM**[®]
AgSystems[™]



Distributed By:

FAROMOR
A CANARM COMPANY

 **BEST
MANAGED
COMPANIES** | Platinum
member

MAY 2023

CANARM LTD. - Corporate Office
2157 Parkedale Ave., PO Box 367 Brockville, ON
Canada K6V 5V6
Tel: (613) 342-5424 Fax: 1-800-263-4598
E-Mail: agsales@canarm.ca

CANARM LTD. - USA Warehouse
808 Commerce Park Drive
Ogdensburg, New York, USA 13669
Tel: 1-800-267-4427 Fax: 1-800-263-4598

Arthur Manufacturing Facility
#7686 Concession 16, RR 4 Arthur, ON
Canada NOG 1A0
Tel: (519) 848-3910 Fax: (519) 848-3948