

CANADA BEST
MANAGED
COMPANIES

Platinum member

CANARM[®]
AgSystems[™]

www.canarm.com

NATURAL & POWERED VENTILATION PRODUCTS



FAROMOR
A CANARM COMPANY

ECsmart MOTOR



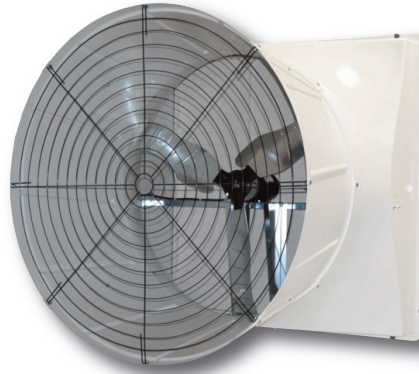
FEATURES

The **FIRST** and **ONLY** motor of its kind in the Agricultural industry

Our ECsmart Motor is an Electronically Commutated Motor. EC motors are electric motors that have permanent magnets on the rotor and use electronics to control the voltage and current applied to the motor. Canarm brings you our latest innovation - the ECsmart motor featuring patent pending electronics. The result is an **ENERGY EFFICIENT** motor that runs **COOLER** than any other in the industry.

Comes with a **FULL 3 YEAR** warranty

EXHAUST FANS



BACK VIEW

54" FIBERGLASS FANS FEATURES

- Performance enhancing cone and VFD are included with HE model; cone is included with AC model.
- Designed with smooth inside and outside for improved cleaning.
- Self draining, sloped housing
- T-Mount belt and direct drive system provides quick, easy access to motor & blade.
- Complete belt drive units and belt tensioner and easily accessible, high quality rubber belt.
- Smooth operating, easy to clean poly shutters.



PLF-EC SERIES

FEATURES

- 12" to 36" Sizes.
- Molded impact resistant black polyethylene housings with UV inhibitors.
- Standard base mount motors are easily replaced.
- Easy to remove shutter with welded steel frame and aerodynamic PVC louvers are held in place by a stainless spring steel pin & is virtually indestructible.
- Powder coated exhaust guard.
- Corrosion proof airfoil polypropylene blades on 12" to 24" sizes.
- 36" fan has a galvanized blade.

PLF and FG series fans continue to be available with our trusted standard AC motors.



FG-EC SERIES

FEATURES

- The patented design provides excellent performance without a cone.
- All fans are supplied completely assembled and are tested before shipping.
- Chop & Spray design with smooth inside for improved cleaning.
- Self draining, sloped housing
- T-Mount belt drive system provides quick, easy access to motor & blade.
- Easy to clean, tie-bar poly shutters with stainless steel frame.
- 36" and 50" belt drive fans.
- 18", 24" and 36" direct drive fans.



72" MAX AIR PLUS

FEATURES

- Produces up to 49,167 CFM.
- The thick fiberglass housing is strong, corrosion resistant and easy to clean.
- Fibreglass discharge cone does not protrude as far as conventional exhaust fans, which reduces the wind scoop effect of the large cones, this significantly impacts the performance when wind blows against the fan.
- Ideal for tunnel and exhaust ventilation.
- Large volume output means fewer fans are required, thus reducing installation costs.
- Optional variable frequency drive.





TRIPLE SEAL



CEILING AIR INLETS

FEATURES

- Single sided Canarm ceiling inlet.
- 1500 cfm.
- Insulated door - Polyurethane injected.
- Available in mechanical and counter balanced.
- CAI-SM – single mechanical.
- CAI-SCB – single counter balanced.
- Inside of the lid is scooped to encourage air to hug the ceiling as long as possible.
- Features alignment boss for back to back installation.
- Rugged, pressure washer safe.

MIN / MAX CONTINUOUS AIR INLETS

FEATURES

- Available in 12", 16" widths.
- Available in white or black FRP shell only, with black extrusion.
- Lightweight CFC free foam insulation with R8 insulation.
- Laminated design for strength and durability.
- FRP panels are UV protected for outdoor use.
- Continuous flexible extruded hinge prevents cold air leakage.
- Unique flexible seal keeps air stream tight to the ceiling for maximum "throw" and eliminates air leakage when closed.
- Easily cleaned with high pressure wash.

AIM BOARDS CONTINUOUS AIR INLETS

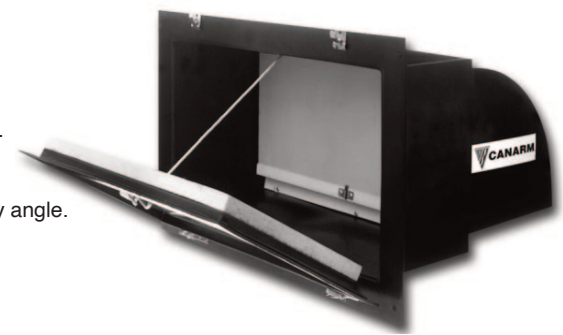
FEATURES

- Available in 8", 12", 16" and 24" widths.
- Available in white or black FRP shell only, with black extrusion.
- Lightweight CFC free foam insulation with R8 insulation.
- Laminated design for strength and durability.
- FRP panels are UV protected for outdoor use.
- Continuous flexible extruded hinge prevents cold air leakage.
- Unique flexible seal keeps air stream tight to the ceiling for maximum "throw" and eliminates air leakage when closed.
- Easily cleaned, pressure washer safe.

MODULAR AIR INLETS

FEATURES

- Inlet housing and door manufactured from polyethylene plastic.
- Baffle and door insulation are manufactured using rigid CFC-free styrofoam insulation.
- Adjustable corrosion proof counter balance slides along on heavy stainless steel wire, and is shrouded with PVC plastic for corrosion protection.
- The insulated winter storm door has stainless steel hinges, and may be opened to any angle.
- A mesh screen over the intake prevents birds from entering the inlet.



ACTUATORS

VENT DOOR ACTUATOR



FEATURES

- Built-in anti-rotation device.
- Ready to mount to the wall (requires 8 lag bolts).
- Built in potentiometer.
- Totally sealed unit.
- Easy to adjust limit switch.
- Easy access wiring.
- Suitable for wet locations.
- cCSAus certified for wet locations.



CIRCULATION FANS

A circulation fan for every application.



54" PANEL FANS

FEATURES

- New larger more rugged design.
- Strong, versatile and adjustable wall/post mount optional.
- Durable black powder coated finish.
- Plastic 3 paddle and stainless steel 6 paddle models available.



72" CYCLONE PLUS

FEATURES

- The Cyclone Plus perform 44,562 CFM with 24.2 CFM per Watt. At nominal speed of 304 RPM with three phase 230/460V - 60Hz motor. Quiet operation.
- Less loss of air at the sides of the fan.
- Includes an automatic belt tensioner.
- Better balanced and vibrates less.



POULTRY CIRCULATING FAN WITH EC MOTOR

FEATURES

- Variable speed EC motor on a 0-10v signal.
- 24" PVC ventilation pipe will not rust, chip or peel.
- Quiet 6 blade polypropylene corrosion proof airfoil.
- Power savings of up to 75%.



BASKET TYPE CIRCULATING FANS

FEATURES

- Variable speed, totally enclosed, sealed ball bearing, thermally protected, high efficiency, dual voltage, 115/230V.
- High volume, corrosion resistant blades.
- Polyester powder coated, steel wire guard to OSHA specifications.
- Galvanized Steel adjustable three way mount. Mount to wall, ceiling or overhead joist. Fan can pivot down and swivel left and right for pin-point control of air stream.
- Fan head comes pre-assembled.
- Use with Automatic control (sold separately).
- Suitable for buildings with low ceilings.



PRF POLY ROUND FANS

FEATURES

- 36" diameter.
- Strong, versatile wall/ceiling mount included.
- Versatile - hangs quickly and points anywhere.
- Strong, powder coated steel guards.
- 1/2 hp, 230 volt single or 3 phase motor.
- Durable poly wrapper.



STAINLESS STEEL PANEL FANS

FEATURES

- Available in 12", 16", 24" and 36" sizes.
- Dual voltage, totally enclosed, variable speed (except for 36"), high efficiency ball bearing motors with thermal overload protection.
- Canarm's exclusive "Rotair" air foil polypropylene blade is designed to deliver high volumes of air quietly and efficiently.
- Single speed 36" model has a high performance galvanized blade.
- Stainless steel panel will not rust and has an 4" extension to allow the installation of air bag.
- All fans are shipped completely assembled.

CIRCULATION FANS

SERCO HVLS

FEATURES

- Optimized 5 blade profile for low speed rotary airfoil application and near ground effect.
- Large air current depth - horizontal floor jet of 3-9 ft (1-3 m).
- NACA airfoil profile reduces drag while producing more airflow.
- Standard black corrosion resistant anodized blades.
- Fan safety system includes guy wires and safety cable.
- Patent pending aluminum hub and blade support system.
- High efficiency variable frequency drive (VFD)
- Adjustable speed control panel with forward/off/reverse switch, self-diagnostics and 4 digit pass code protection.
- Aerodynamic blade winglets with patent pending design and made from high density polyethylene (HDPE).
- Supplied with 25 feet of power cable pre-wired to fan motor (connection to power source by others.)
- UL certified motor and controls.
- Fused disconnect and line reactor standard.



FANBOS HVLS



CP96PG/CP120PG

FEATURES

- Six aluminum airfoils contoured for maximum air movement.
- DC motor for quiet performance and low operating cost.
- 5 speed forward and reverse with remote control (wall mountable).
- Control multiple fans with one remote within 50'.
- 1/4" powder-coated steel and anodized aluminum chassis resists rusting and corrosion even in cold and damp environments.
- Standard with a 1" diameter 12" downrod mount. Optional 24" and 36" long downrods are available to purchase.
- Easy installation with standard ball hanger design.
- 48" lead wires.
- 120 volt.
- Damp rated.
- Available in grey, white and matte black finishes.
- CP96-LEDBK comes complete with light kit.
- 5 year warranty.



CP96-LEDBK
Complete with light kit



CP96BK/CP120BK



CP96WH/CP120WH



Optional 1000 Lumens Light Kits



LK-CPWH - White



LK-CPBK - Matte Black



LK-CPPG - Grey

CONTROLS



UNITY NATVENT - DAIRY CURTAIN CONTROL

FEATURES

- 16 and 24 output versions.
- Controls 4 curtains.
- Has variable speed triac control and 0-10V outputs if required.
- Ability to control other functions like fans, lighting, foggers/misters.
- Supports 5 temperature probes, 1 outdoor (option).
- Curtain timers accurate to 1 second.
- Easily updatable via USB and that you can upload existing programs onto new Unity's to cut down on the initial setup time.
- Variable outputs and variable DC signal outputs.
- Inlet-actuator and curtain controls.
- Duty cycle and timed events.
- Single unit will support up to 24 outputs; but with the expansion port, it can accommodate up to 96 outputs.
- Compatible with most ventilation strategies: natural, forced, and tunnel ventilation.



NANO FEATURES

INCREASED FLEXIBILITY IN HUMIDITY CONTROL

EVEN MORE USER FRIENDLY VENTILATION PROGRAMMING

NOW WITH CURRENT SENSING CAPACITY FOR ALL RELAY AND VARIABLE OUTPUTS

- Optimization of the temperature and the ambient air quality through the combined management of the ventilation, air inlets and heating.
- Temperature, min/ max ventilation parameters can be programmed according to animal age.
- Management of the air inlets, ventilation, heating, fogger, lighting, feed lines and feed bins.
- Management of dedicated equipment via timers.
- Ventilation adjustments with outdoor temperature compensation and night adjustment.
- Air inlet compensation according to static pressure.
- Humidity compensated by heating and ventilation.
- Option to program 8 lighting periods according to animal age.
- Excellent decision support tools are provided through reports and histories produced.
- True Bypass switches let you easily take control of your outputs.
- Clever clean wiring for easy access.
- Full remote access and control from anywhere when an Internet connection is available and the PC compatible software is installed.
- Independent cards for easy maintenance.



FLICKER FREE LED LIGHT DIMMER FEATURES

- FLICKER FREE smooth transition lighting results in calmer, healthier birds.
- Precision control designed to allow control and adjustment of the light duration and intensity from 0-100%.
- Extreme low light dimming encourages hens to return to nest.
- Programmable up to 20 light periods and up to 20 light peaks per period.
- User-friendly interface and menus.
- Superior stability.
- Master can be configured as a slave unit.
- Two independently configured outputs, each rated for 1000 W (8.3 amps).



SOLO CLIMATE CONTROL FEATURES

- Memory protection in the event of power failure
- Alarm contact (NO/NC) in case of power failure, min/max temperatures or fault in operation.
- Optional electronic bypass switches.
- Overload protection on the output.



NATURAL VENTILATION - CURTAIN SYSTEMS



MAX AIR CURTAIN SYSTEM FEATURES

- Single Curtain up to 14 ft. high.
- Optional pipe drive operating system eliminates main cable and drop pulleys in standard operating systems.
- Eliminates mid wall header required for split curtain systems.
- Can be operated manually or automatically.



ROLL-A-WAY (RAW) CURTAIN SYSTEM FEATURES

- Single curtain up to 10 ft. high.
- Combined with a bottom roll up curtain for larger wall openings.
- Available with pipe drive operating hardware.
- Can be operated manually or automatically.
- Wind protection with nylon cord, pipe or straps.



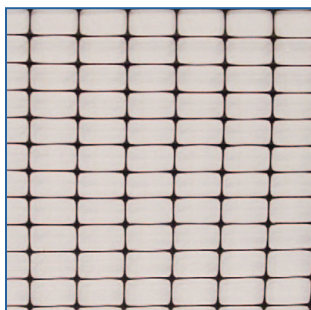
BOTTOM ROLL-UP (BRU) CURTAIN SYSTEM FEATURES

- Single Curtain up to 8' high.
- Center Tube option for larger openings.
- Can be combined for a split curtain system.
- Can be used as an end wall curtain for additional hot weather air intake.
- Can be operated manually or automatically
- Wind protection with nylon cord, pipe or straps.



EZ ROLL CURTAIN SYSTEM FEATURES

- Can be used as a single curtain system or as a split curtain for larger openings.
- Re-designed drive units have a cable lift system that ensures a smooth and even roll up at both ends of the curtain section.
- End and centre mount drives are available.
- Can be operated manually or automatically.



PLASTIC POULTRY NETTING

- Screen opening dimensions:
1" x 3/4" (18mm x 25mm)



HEAVY DUTY PLASTIC BIRD SCREEN

- Screen opening dimensions:
1.1" x 1.6" (27.94mm x 40.64mm)

NATURAL VENTILATION - CURTAIN SYSTEMS

STANDARD TOP DOWN (TD) CURTAIN SYSTEM

FEATURES

- Available in 3' - 8' heights.
- Fastened at the bottom and lower from the top on a cable pulley system.
- Fully adjustable end pockets for easy future repair.
- Can be operated manually or automatically.
- Wind protection with nylon cord, pipe or straps.
- Ideally suited for overshoot ridge applications.



INSULATED SIDEWALL CURTAIN SYSTEM

FEATURES

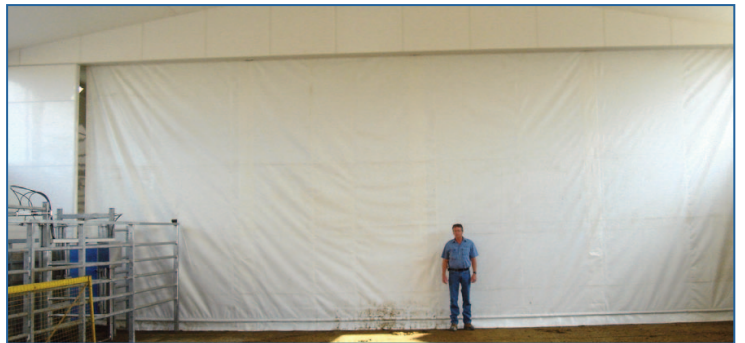
- Available in 2' - 8' heights.
- Uses a 7 layer fabric for additional insulation value.
- Top down only operation.
- Wind protection with nylon cord, pipe or straps.
- Can be operated manually or automatically.



VINYL ROLLER CURTAIN (VRC)

FEATURES

- Easy to wash material.
- Long life expectancy.
- Available in a variety of colours and sizes.
- Can be run by manual crank at one end of the unit or powered and controlled with a toggle switch located in a convenient area such as the operator pit, the parlour and/or holding area.



LIFT UP CURTAIN (LUC)

FEATURES

- Easy to wash material.
- Choose between 18oz vinyl or 7oz fabrene material.
- Long life expectancy.
- Available in a variety of colours and sizes.
- Can be manually operated with winch or electric drive.



NV4 CONTROL

Faromor's NV4 ventilation controller operates each section of curtain or panel independently using individual temperature sensors.



WEATHER STATION

The optional weather station allows additional positioning of the curtains or panels depending on wind speed, wind direction, and the presence of rain.

NATURAL VENTILATION - PANEL SYSTEMS



CLEARVU PANEL SYSTEMS FEATURES

- Available in heights from 24" to 72".
- Aluminum frame with clear acrylic inserts.
- Optional pipe drive operating hardware.
- Can be operated manually or by automatic power drives connected to a thermostat.
- All hardware is stainless steel, aluminum or galvanized for longer life expectancy.



SOLARVU PANEL SYSTEMS FEATURES

- Available in heights from 24" to 72".
- Aluminum frame with Lexan inserts.
- Optional pipe drive hardware.
- Can be operated manually or by automatic power drives connected to a thermostat.
- Feature a continuous rubber seal which allows for draft free closing of the panel and minimal heat loss in cold weather.



VERTICAL INSULATED PANEL SYSTEM (VIP) FEATURES

- Solid insulated panel.
- Operates vertically as a moveable ventilation wall.
- Available w/ thermal glass windows.
- Can be custom designed for organic poultry access openings.
- Can be operated manually or by automatic power drives connected to a thermostat.
- Optional pipe drive operating hardware.



CLEARVU HINGED PANEL SYSTEMS FEATURES

- Available in heights from 24" to 72".
- Aluminum frame with clear acrylic inserts.
- Top hinged with rack and pinion operating hardware.
- Can be operated manually or by automatic power drives connected to a thermostat.
- All hardware is stainless steel, aluminum or galvanized for longer life expectancy.



TRANSPARENT WALL VENT FEATURES

- Made from an extruded aluminum frame and clear acrylic.
- Available in custom sizes.
- Available in custom hinge positions.
- Can be operated individually or in series with a variety of operating systems based on operator or animal movement on the inside of the building.
- Can be operated manually or by automatic power drives connected to a thermostat.
- Aluminum wall vents are pre-hinged with stainless steel hinges in a self-flashing outer frame.

NATURAL VENTILATION - RIDGE SYSTEMS

FRP CHIMNEYS FEATURES

- 24", 30" and 36" sizes.
- Fully insulated duct section.
- Plastic caps available in colours.
- Extendable for attic applications.
- Can be peak mounted or slope mounted.
- Available with optional Lexan skylight package.
- Available with optional attic ventilators for vaulted ceiling buildings.



SOLAR DOME FEATURES

- 24", 36" and 48" sizes.
- Used as a "cover" for new or existing open ridges.
- Roof mounted flashing included to minimize snow penetration.



SKYLIGHT SYSTEM FEATURES

- Available standard for 2' and 3' openings.
- Custom sizes available.



Do your curtains or panels need a little TLC?

Curtains and panels break down over time from sunlight and weather conditions. If your system is showing a lot of wear and tear, make sure it gets the attention it needs before the busy season sets in.

Get in touch with us to have an professional, experienced Faromor service technician come care for your system. Call us today at 1-800-260-5314.

For replacement options visit canarm.com/faromor.



Platinum member



APRIL 2023

CANARM LTD. - Corporate Office
PO Box 367 2157 Parkedale Ave.,
Brockville, ON
Canada K6V 5V6
Tel: (613) 342-5424 Fax: 1-800-263-4598

Arthur Manufacturing Facility
#7686 Concession 16, RR 4
Arthur, ON
Canada NOG 1A0
Tel: (519) 848-3910 Fax: (519) 848-3948

CANARM LTD. - USA Warehouse
808 Commerce Park Drive
Ogdensburg, New York,
USA 13669
Tel: 1-800-267-4427 Fax: 1-800-263-4598