

# AGRICLÉ

AN AVENORD DIVISION

## COW MATS AND MATTRESSES



Lying surface for elevated cubicles.

Dairy cattle.

# Soft Bed HT 8GS.



relief of pressure points + easy lying down and rising + high lying comfort + longer lying bouts + more rumination + higher milk production



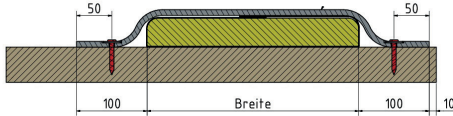
100 % new tire compound



Top surface  
Hammered profile



Bottom surface  
Reinforced with extra strong fabric



Cross section in mm Specification.

Comfort ●●●●●

Application	Lying surface for elevated cubicles for dairy cattle
Suitability	New construction and retrofitting
Thickness	
Cover sheet	8 mm (weight: 10,7 kg/qm)
Composite foam	optional 30 mm or 40 mm
Total	38 mm or 48 mm
Length	10 to 70 m
Width	1800 mm or 2000 mm
Top surface	Hammered profile
Bottom surface	Smooth, reinforced with extra strong fabric
Substructure	30 or 40 mm composite foam optional wrapped in foil
Penetration depth	25,3 mm with 40 mm composite foam according to DLG test method
Special features	+ Fast drainage of liquids. + Extremely tear resistant.
Installation	Rolled solution (no joiners) + Composite foam sheets
Warranty	10 years warranty on the complete system

DIN-3763  
class 4

## Advantages at a glance.

- + Fast drainage of liquids due to a slight slope in the rear area of the mats.
- + Particularly tear-resistant due to extra-strong fabric.
- + Years of dimensional stability, as compression hardness of composite foam sheets is designed for high point load of cows.

## Special advantages of roll material.

- + Easy cleaning of cow places due to proven surface.
- + No joints - less wear and dirt.
- + Very easy to lay with the help of roll material and handy size of composite foam sheets.
- + Suitable for any cubicle width, as no joints are necessary with roll material.



Composite foam optional packed in foil.

The composite foam made of latex mixture improves weight distribution, reduces pressure points of the animals and provides maximum lying comfort.

## Tested for you.



HUBER TECHNIK VERTRIEBS GMBH  
RUBBER MAT 8GS  
✓ Deformability/elasticity  
✓ Permanent tread load  
✓ Abrasion  
✓ Slip resistance  
DLG Test Report 7246

In DLG Test 7246, the deformability and elasticity of Softbed 8 GS before and after permanent tread load test were rated "very good". The wear resistance and slip resistance were rated "good".



CONTINUOUS  
MONITORING  
RUBBER FLOOR MATS  
FOR ANIMAL HOUSES  
✓ PAH harmless  
✓ Manufacturing  
process certification  
DLG Certificate 6910

Our rubber coverings have passed the "PAH harmless" test. All rubber compounds produced are below the DLG guideline values. We are one of the only suppliers to receive the "PAH harmless" certification.



The assembly instructions and the DLG test report on the soft bed 8GS can be found at: [www.cow-comfort-huber.com](http://www.cow-comfort-huber.com)

# Comfort Roll N33.



relief of pressure points + easy lying down and rising + high lying comfort + longer lying bouts + more rumination + higher milk production



100 % new tire compound



Top surface  
Hammered profile



Bottom surface.  
Different height flexible studs  
with 12 mm and 20 mm



Cross section.

Comfort ●●●●○

Application	Lying surface for elevated cubicles / stalls for dairy cattle / replacement heifers
Suitability	New construction and retrofitting
Thickness	
Cover sheet	13 mm
Studs	20 mm
Total	33 mm (weight: 17,2 kg/qm)
Length	10 to 40 m
Width	1900 mm
Slope	With slight slope at the head and foot area on the outer 300 mm
Top surface	Hammered profile
Center	Fabric reinforcement
Bottom surface	12 mm and 20 mm flexible studs
Penetration depth	16,1 mm according to DLG test method
Special features	+ Slope on both sides. + Full rubber profile. + Easy installation.
Installation	Rolled solution (no joiners)
Warranty	10 years

DIN-3763  
class 3

## Advantages at a glance.

- + Fast drainage of liquids due to a slope on both sides.
- + Years of dimensional stability due to solid rubber profile.
- + Optimum comfort due to special stud geometry.

## Special advantages of roll material.

- + Easy cleaning with hammered profile surfaces.
- + No joints - less wear and dirt.
- + Very easy to lay with the help of roll material.
- + Suitable for any cubicle width, as no joints are necessary with roll material.



Specially designed stud geometry.

The comfort covering N33 is characterized by studs of different heights on the underside. This special stud geometry provides even more comfort for the cow through its cushioning function.



Fluid drainage.

Due to a slope on both sides in the head and foot area on the outer 300 mm, liquids run off faster.

## Tested for you.



HUBER TECHNIK VERTRIEBS GMBH  
RUBBER MAT N33  
✓ Deformability/elasticity  
✓ Permanent tread load  
DLG Test Report 7249

In DLG test 7249 and 7248, the deformability and elasticity of the comfort roll N33 was rated "excellent".



HUBER TECHNIK VERTRIEBS GMBH  
RUBBER MAT N33 BTS  
✓ BTS Cattle (Females)  
DLG Test Report 7248

"BTS cattle" includes joint disorders and behavioral observation, as well as measurement of product deformability. The comfort roll N33 fulfills all the requirements of the DLG test.



**CONTINUOUS  
MONITORING**  
RUBBER FLOOR MATS  
FOR ANIMAL HOUSES  
✓ PAH harmless  
✓ Manufacturing  
process certification  
DLG Certificate 6910

Our rubber coverings have passed the "PAH harmless" test. All rubber compounds produced are below the DLG guideline values. We are one of the only suppliers to receive the "PAH harmless" certification.



The installation instructions and the DLG test report on the comfort roll N33 can be found at:  
[www.cow-comfort-huber.com](http://www.cow-comfort-huber.com)



# Comfort Roll N25.



relief of pressure points + easy lying down and rising + high lying comfort + longer lying bouts + more rumination + higher milk production



100 % new tire compound



Top surface  
Hammered profile



Bottom surface  
12 mm flexible studded profile



Cross section.

Comfort ●●●●○

Application	Lying surface for elevated cubicles / stalls for dairy cows / replacement stock
Suitability	New construction and retrofitting
Thickness	
Cover sheet	13 mm
Studs	12 mm
Total	25 mm (weight: 16,1 kg/qm)
Length	10 to 50 m
Width	1800 mm
Slope	With slope in the head and foot area on the outer 100 mm
Top surface	Hammered profile
Center	Fabric reinforced
Bottom surface	12 mm flexible studded profile
Penetration depth	11,6 mm according to DLG test method
Special features	+ Slope on both sides. + Full rubber profile. + Easy installation.
Installation	Rolled solution (no joiners)
Warranty	10 years

DIN-3763  
class 2

## Advantages at a glance.

- + Fast drainage of liquids due to a slope on both sides.
- + Years of dimensional stability due to solid rubber profile.
- + Optimum comfort due to special stud geometry.

## Special advantages of roll material.

- + Easy cleaning with hammered profile surfaces.
- + No joints - less wear and dirt.
- + Very easy to lay with the help of roll material.
- + Suitable for any cubicle width, as no joints are necessary with roll material.



**Specially designed stud geometry.**  
The comfort coverings are characterized by studs of different heights on the underside. This special stud geometry provides even more comfort for the cow through its cushioning function.



**Fluid drainage.**  
Due to a slope on both sides in the head and foot area on the outer 100 mm, liquids run off faster.

## Tested for you.



HUBER TECHNIK VERTRIEBS GMBH  
RUBBER MAT N25XXL  
✓ Deformability/elasticity  
✓ Permanent tread load  
DLG Test Report 7250

In DLG test 7250, the deformability and elasticity of the comfort roll N25 before and after permanent treat load test were rated as "excellent" was rated "excellent".



HUBER TECHNIK VERTRIEBS GMBH  
RUBBER MATS N20 AND N25XXL BTS  
✓ BTS Cattle (Females)  
DLG Test Report 7251

"BTS"-Rindvieh" includes joint disorders and behavioral observation, as well as measurement of product deformability. The comfort roll N25 fulfills all requirements of the DLG test for dairy cows.



**CONTINUOUS  
MONITORING**  
RUBBER FLOOR MATS  
FOR ANIMAL HOUSES  
✓ PAH harmless  
✓ Manufacturing  
process certification  
DLG Certificate 6910

Our rubber coverings have passed the "PAH harmless" test. All rubber compounds produced are below the DLG guideline values. We are one of the only suppliers to receive the "PAH harmless" certification.



The installation instructions and the DLG test report on the comfort roll N25 can be found at:  
[www.cow-comfort-huber.com](http://www.cow-comfort-huber.com)

# Comfort Roll N20.



relief of pressure points + easy lying down and rising + high lying comfort + longer lying bouts + more rumination + higher milk production



100 % new tire compound



Top surface  
Hammered profile



Bottom surface  
10 mm flexible studded profile



Cross section.

Comfort ●●●○○○

Application	Lying surface for elevated cubicles / stalls for dairy cows / replacement heifers / calves
Suitability	New construction and retrofitting
Thickness	
Cover sheet	10 mm
Studs	10 mm
Total	20 mm (weight: 12,8 kg/qm)
Length	10 to 50 m
Width	1200 mm, 1500 mm, 1600 mm, 1700 mm, 1800 mm, 1850 mm, 2000 mm to 3000 mm
Slope	At 1850 mm width, the flooring has a slope at the top and bottom on the outer 100 mm.
Top surface	hammered profile
Center	fabric reinforcement
Bottom surface	10 mm flexible studded profile
Penetration depth	10,6 mm according to DLG test method
Special features	+ Slope on both sides with a width of 1850 mm. + Full rubber profile. + Easy installation.
Installation	Rolled solution (no joiners)
Warranty	10 years

DIN-3763  
class 2

## Advantages at a glance.

- + Fast drainage of liquids due to a slight slope at 1850 mm width.
- + Years of dimensional stability due to solid rubber profile.
- + Optimum comfort due to special stud geometry.
- + Slip resistance due to the penetration of the claws into the knob cavities.

## Special advantages of roll material.

- + Easy cleaning with hammered profile surfaces.
- + No joints - less wear and dirt.
- + Very easy to lay with the help of roll material.
- + Suitable for any cubicle width, as no joints are necessary with roll material.



## Specially designed stud geometry.

The comfort coverings are characterized by different studs on the underside. This special stud geometry provides even more comfort for the cow through its cushioning function.

## Tested for you.



In the DLG test 7252 and 7251, the deformability and elasticity before and after permanent treat load test on the comfort roll N20 were rated "excellent". The wear resistance was rated "good".



"BTS"-Rindvieh" includes joint disorders and behavioral observation, as well as measurement of product deformability. The comfort roll N20 fulfills all requirements of the DLG test for dairy cows.



Our rubber coverings have passed the "PAH harmless" test. All rubber compounds produced are below the DLG guideline values. We are one of the only suppliers to receive the "PAH harmless" certification.

Walkway and milking parlor flooring. Paved surfaces.



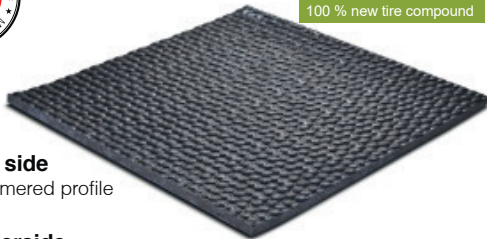
# Alley Floor / Milking Parlour N15.



+ relief of pressure points + better hoof health + lower costs + secure footing + encourages natural animal behavior + shorter gating time



100 % new tire compound



**Top side**  
Hammered profile



**Underside**  
5 mm flexible studded profile



Cross section in mm Specification.

Surefootedness ●●●●●

<b>Application</b>	Walkways on flat surfaces milking parlors and walkways. Ideal for jointless waiting areas, as coverings up to 3000 mm wide are available. Calving and selection area, Elevated feeding stall, milking pit, etc.
<b>Suitable</b>	New construction and retrofitting
<b>Thickness</b>	
Top layer	10 mm
Studs	5 mm
Total	15 mm (weight: 12,4 kg/qm)
<b>Length</b>	10 to 70 m from 2000 mm width max. roll length 50 m width 500 to 3000 mm (in 100 mm steps)
<b>Top side</b>	Hammered profile
<b>Middle side</b>	fabric reinforcement
<b>Bottom side</b>	5 mm flexible studded profile
<b>Penetration depth</b>	4,7 mm according to DLG test method
<b>Special features</b>	+ Full rubber profile. + Easy installation.
<b>Installation</b>	Rolled solution (no joiners)
<b>Warranty</b>	10 years

## Advantages at a glance.

- + **Years of dimensional stability** due to solid rubber profile.
- + **Optimum comfort** due to special stud geometry.

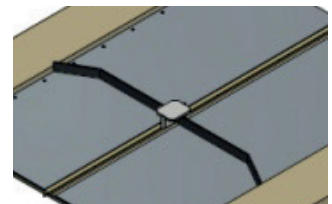
## Special advantages of roll material.

- + **Easy cleaning** with hammered profile surfaces.
- + **No joints** - less wear and dirt.
- + **Very easy to lay** with the help of roll material.



Specially designed stud geometry.

The comfort coverings are characterized by different studs on the underside. This special stud geometry provides even more comfort for the cow through its cushioning function.



Use with manure pusher.

The covering is only sparingly fastened. It is also possible to use a suitable manure slide with the Alley Floor N15. In this case, the entire slide weight remains on the concrete floor. This protects the edges of the walkway covering.

## Tested for you.



Our rubber coverings have passed the "PAH harmless" test. All rubber compounds produced are below the DLG guideline values. We are one of the only suppliers to receive the "PAH harmless" certification.



The installation instructions for the alley floor and milking parlor N15 can be found at:  
[www.cow-comfort-huber.com](http://www.cow-comfort-huber.com)

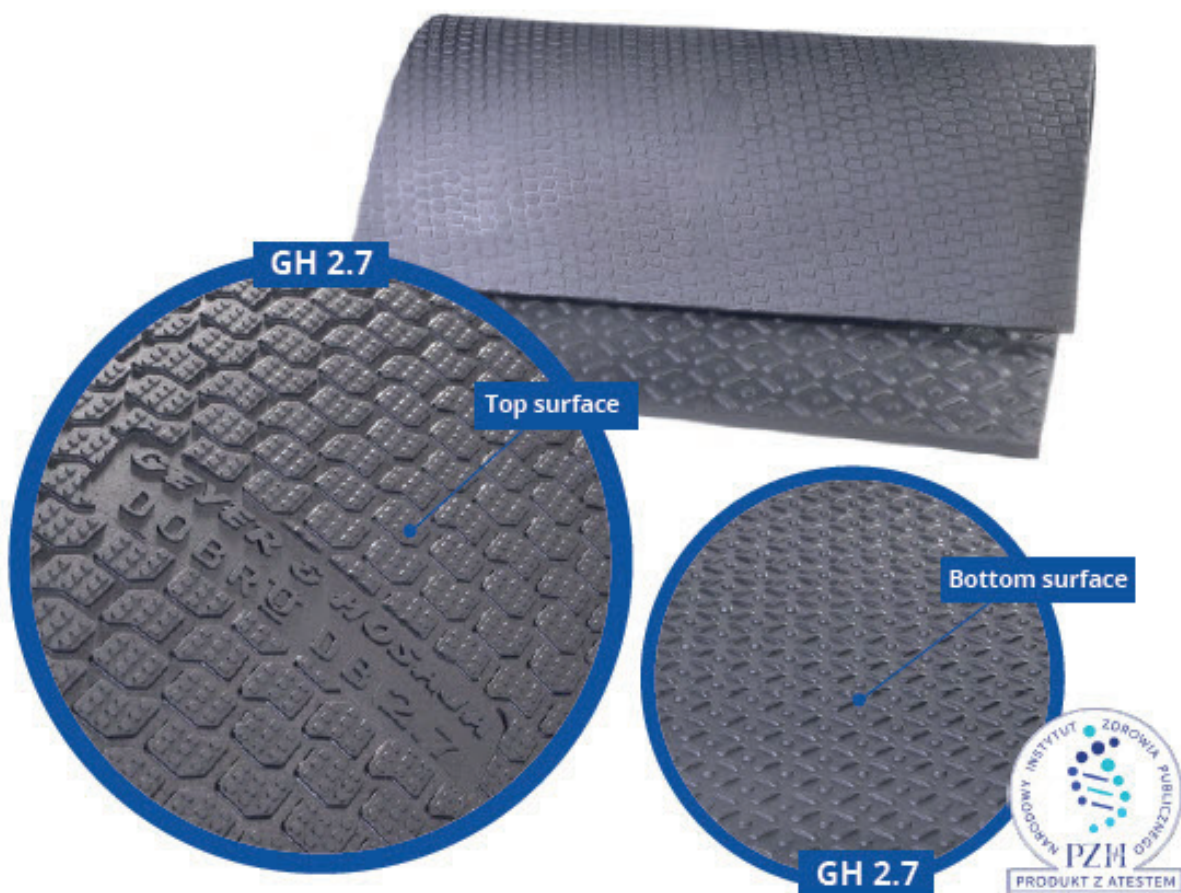
# GH 2.7

model	Application	Warranty	Dimensions
GH 2.7	Passage corridors (under scrapers), milking parlours, waiting rooms	5 years	1100 x 1600 mm thickness 24 mm

## Benefits

- Imitates natural ground
- Mat with increased strength and abrasion resistance
- Quick and easy assembly
- Customised sizes are available
- The mat surface greatly reduces slippage, but makes cleaning difficult

## Product gallery |



For more info on cow mats,  
contact us:

[ventes@avenord.com](mailto:ventes@avenord.com)  
1 888 994-3130