

# 2018 reader survey results

It's been a few years since we heard from *Progressive Cattleman* readers in a survey. So this year, we invited readers once again to respond to questions about their herds, operations and production methods. Here's what they told us.

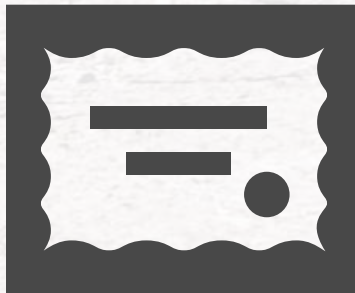


**67%** of readers have between 100 and 500 head of cattle.

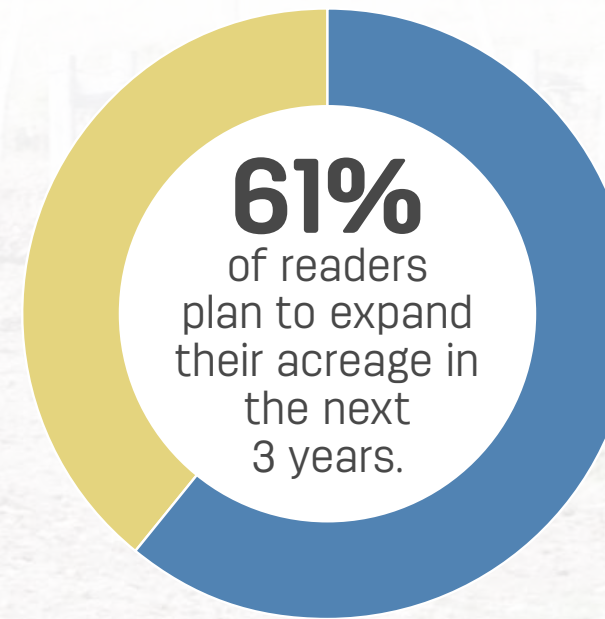
**81%** of readers are cow-calf producers.



**32%** of readers have registered cattle.



● Yes **61%**  
● No **39%**



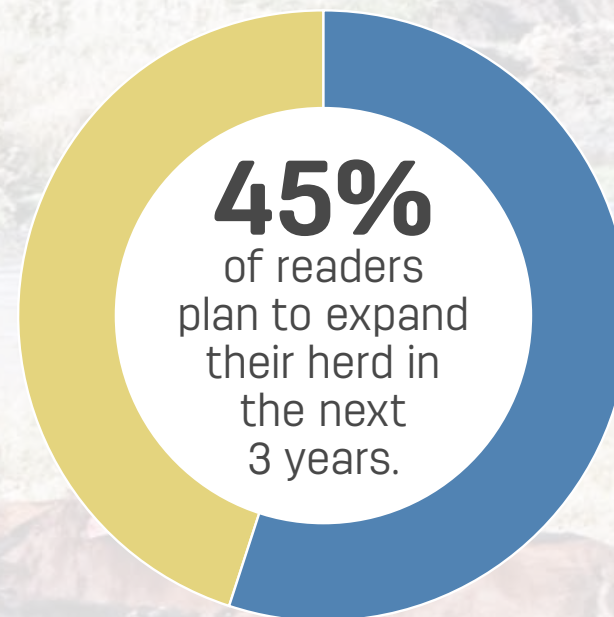
Which top 5 factors are most important when selecting a bull?



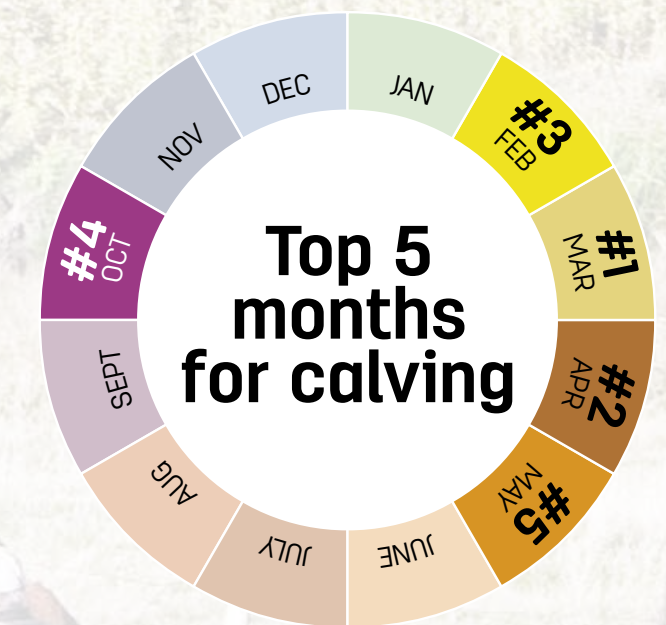
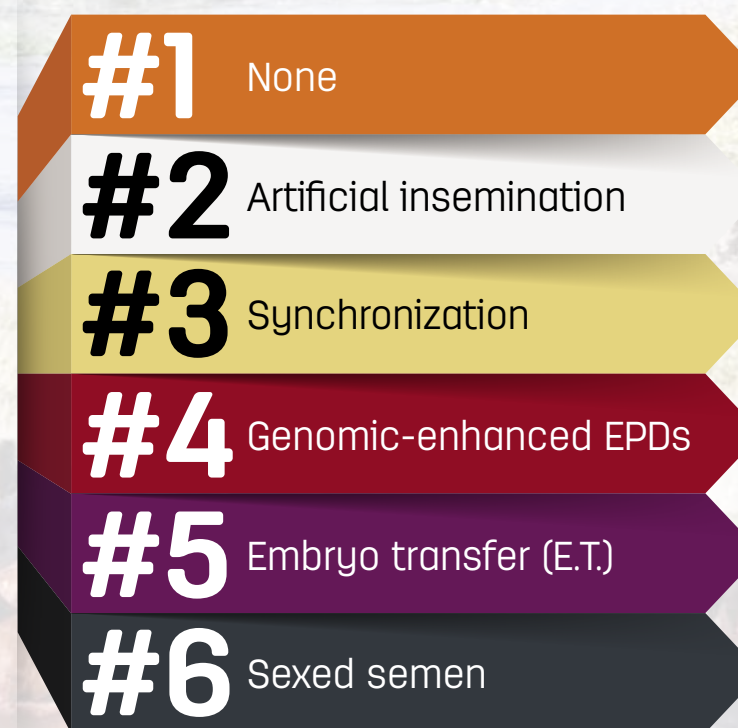
## Which market niches do you target with your cattle?



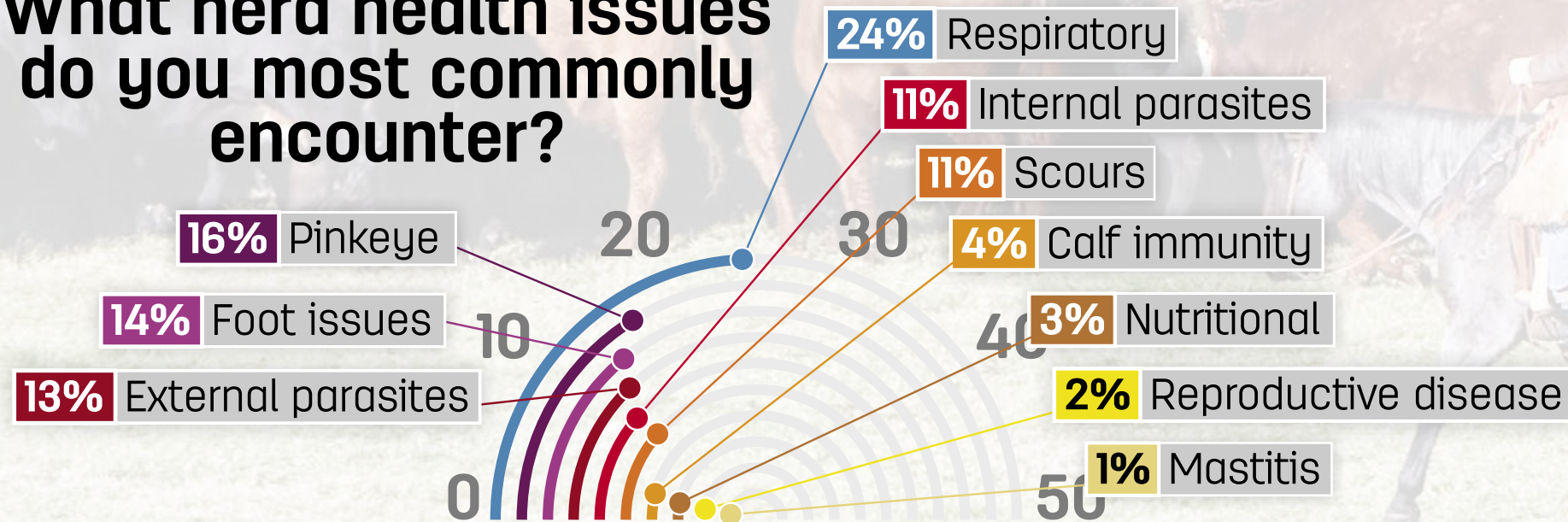
● Yes **45%**  
● No **55%**



## Which reproduction tools do you use for your herd?



## What herd health issues do you most commonly encounter?



## How do you sell your cattle?

