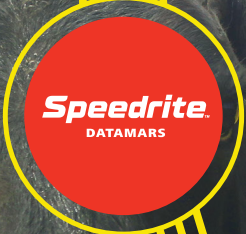
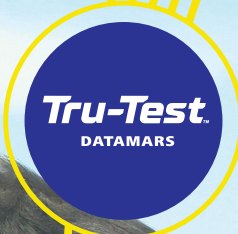


DATAMARS
Livestock[™]



**Weight Management, EID
& Animal Identification**

Livestock Management Solutions
PRODUCT GUIDEBOOK

A Measurable Difference

We are dedicated to providing a more comprehensive, integrated livestock management portfolio. As a result, we have united our product brands under a single family – Datamars Livestock.

Our goal is to provide producers with the essential tools to meet the increasing global demand for high-quality protein. The journey begins with tag identification at birth. As animals grow, our products meticulously track data insights, facilitating fact-based decision-making. Our animal health delivery systems ensure dose accuracy, safety, and efficiency, thereby saving time and reducing stress. Taking it a step further, our line of livestock scales and EID readers collect real-time data for effective management throughout the animal's life cycle.

Managing data insights extends beyond livestock. Our electric fencing products offer exceptional containment or exclusion practices for permanent, semi-permanent, or temporary fencing solutions. Automatic Waterers provide producers with a simple, clean, and healthier method of water management.

At Datamars Livestock, we take pride in delivering quality products and exceptional service. We believe in the future of agriculture and are ready to assist with any challenges at hand.

ABOUT US

Established over 35 years ago, Datamars Livestock's growth has been founded on research and development-driven innovation. Our mission is to provide world-leading solutions for livestock management and animal health, with a central focus on enhancing the efficiency of livestock production. Our solutions encompass farm infrastructure, animal identification, individual animal weight and activity performance systems, and animal health delivery systems supported by the Datamars Livestock cloud software which provides producers with real-time performance insights about their livestock.

Datamars Livestock features globally recognized brands such as Z Tags, Temple Tag, Tru-Test, Speedrite, Patriot, NJ Phillips, and Simcro. Datamars Livestock – North America is headquartered in Temple, TX.

VISIT [LIVESTOCK.DATAMARS.COM](https://www.livestock.datamars.com)

Tru-Test Weighing & EID Stick Readers

VISIT [TRU-TEST.COM](https://www.tru-test.com)

Speedrite Superior Electric Fencing

VISIT [SPEEDRITE.COM](https://www.speedrite.com)

Patriot Quality Electric Fencing

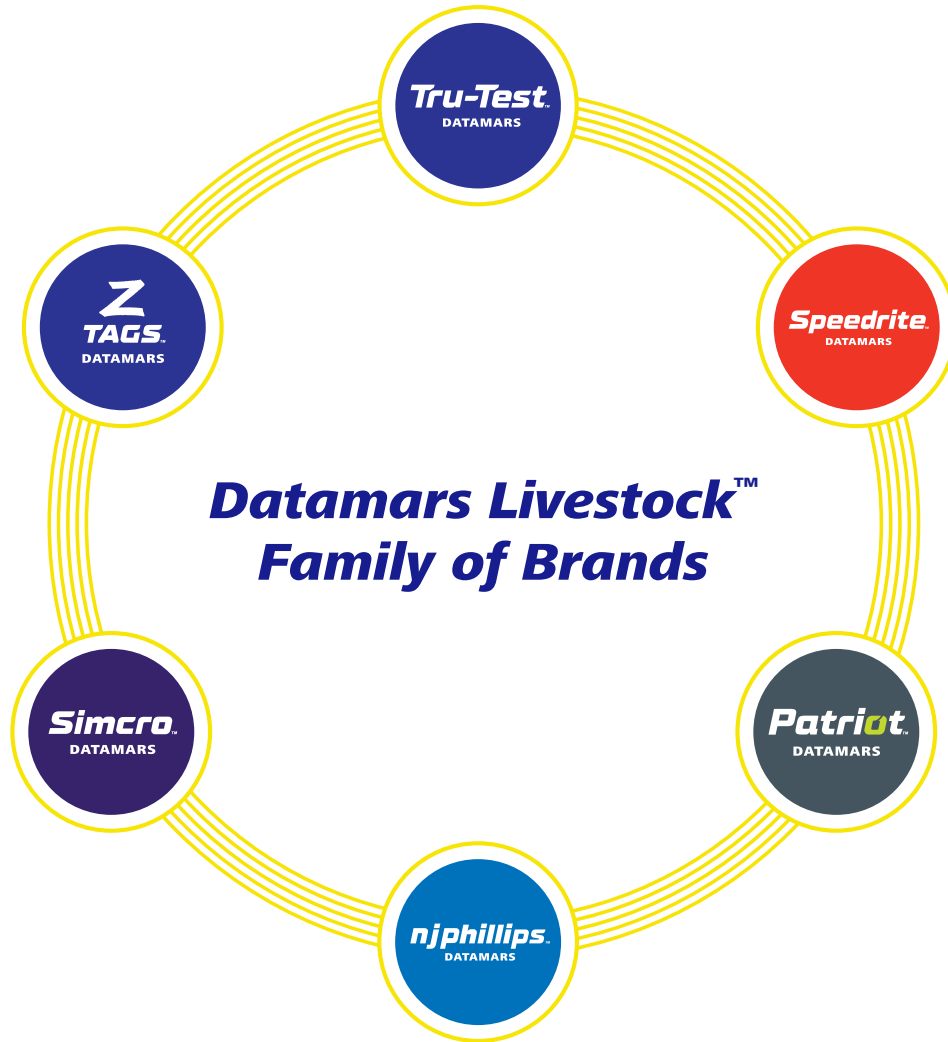
VISIT [PATRIOTGLOBAL.COM](https://www.patriotglobal.com)

Z Tags & Temple Tag Livestock Identification Tags

VISIT [ZTAGS.COM](https://www.ztags.com)

NJ Phillips & Simcro Animal Health Delivery Systems

VISIT [NJPHILLIPS.COM](https://www.njphillips.com)
VISIT [SIMCRO.COM](https://www.simcro.com)



CONTENTS

WHY WEIGH?	4	ANIMAL IDENTIFICATION	20
Benefits of Weighing	4	Selecting a Tag	21
Indicators	5	Identification Tag Selection	22
Indicator Comparison	7	EID & Matched Sets	23
EID Readers	8	Z1 No-Snag-Tags	26
Improving Efficiency & Maximizing Profits	10	Stockman Tags	29
EID Weigh System Example	11	Tissue Sampler Tags	32
Load Bars	12	Tag Marking Options	35
Platforms	14	Original Tag	36
Weighing Accessories	16	Tag Retention Tips	38
Data Management & Reporting	18	Applicators & Tag Accessories	39

Why Weigh?

Tru-Test
DATAMARS

Weighing replaces guesswork with facts, serving as a potent performance measurement tool for producers. Tru-Test scale indicators play a crucial role in facilitating critical decision-making regarding feed, health treatments, and herd management.

While weighing alone is a valuable addition to your operation, the integration of electronic identification brings an added layer of efficiency. This technology allows for the seamless collection and management of data, enabling the maximization of individual animal performance.

By gathering data such as weaning weights, dam or sire information, animal health records, or withdrawal periods, Tru-Test products contribute to profit maximization and more precise management of insights.

You can't manage what you don't measure.

Benefits Of Weighing



MAXIMIZE
PROFITABILITY



COLLECT KEY
WEIGHT DATA



MONITOR
PERFORMANCE



TREAT
ACCURATELY

Maximize Profitability: Boost profitability by recognizing that effective management requires accurate measurement.

Collect Key Weight Data: Efficiently manage inputs by tracking performance and weight gain, allowing for better control over feed and resource costs.

Monitor Performance: Gather data and closely monitor crucial weights, such as birth weights, weaning weights, and yearling weights, to optimize individual animal performance.

Treat Accurately: Enhance treatment efficiencies by precisely calculating dosage based on individual animal requirements, thereby preventing under- or over-dosing of livestock.

INDICATORS

Tru-Test indicators are the fastest, most versatile, accurate, and durable in the world.

Superdamp™ technology, exclusive to Tru-Test, rapidly locks in on weights, even with the most energetic animals. In just 2 seconds*, our indicators can precisely capture a weight, and a clear stable light indicates readiness for recording.

An auto-zero function is also in place to reset any accumulation of dirt or manure to zero once the animal exits the scale. The 5000 series boasts industry-leading features, providing state-of-the-art data collection options right at the chute side.

XR5000

Ideal for operations with either a commercial or seedstock focus, as well as those interested in a broad spectrum of performance indicators.

- Stores 1 million records in 1000 weigh sessions.
- Calculates target weights based on age & breed.
- Stores 100 pieces of custom info per individual.
- Allows up to 10-way sorting by custom criteria.
- Calculates treatment dosage by weight to minimize waste.
- Tracks treatments and sets alarms for withholding periods.
- Long-life battery: 10 hours with backlight on, 13 hours with it off.
- Compatible with Bluetooth® EID readers.



823436; 880 0000-182

ID5000

Ideal for operations with weight gain and other important performance focus.

- Stores 250,000 records in 250 weigh sessions.
- Records weight gain to track growth.
- Stores up to 3 IDs and 3 pieces of data sets (breed, sex or other) per animal.
- Allows up to 5-way sorting by weight, weight gain and single criteria.
- Long-life battery: 10 hours with backlight on, 13 hours with it off.
- Compatible with Bluetooth EID readers.



823435; 880 0000-787

EziWeigh7i

Ideal for operations interested in entry-level data collection.

- Stores 20,000 records across 100 weighing sessions.
- Summarizes statistics from both past and current weigh sessions for quick reference.
- Enables up to 3-way sorting by weight.
- Allows recording of notes against each individual animal.
- Long-life battery: Up to 15 hours of run time, 3 hours charge time, with auto power down to conserve battery life.
- Compatible with Bluetooth EID readers.



829008; 880 0000-474

S3

Ideal for operations interested in basic weight display and recording for herd management.

- Simple to use
- Rugged and waterproof
- Bluetooth low energy connectivity
- Record weights & configure settings via Data Link app



834021; 880 0002-591

S3 Weigh System with MP600 Load Bars

Ideal for operations interested in basic weight display and recording for herd management.

- Simple to use
- Rugged and waterproof
- Bluetooth low energy connectivity
- Record weights & configure settings via Data Link app



834024; 880 0002-593

INDICATOR COMPARISON

TECHNICAL	XR5000	ID5000	EZI WEIGH 71	S3
Is my indicator visible in direct sunlight?				
Is my indicator water and dust proof?				
Can I view statistics on screen in the field?				No
Can I view animal history on screen in the field?			No	No
Can I easily set up my scale by using preloaded setup?			No	No
Can animals be sorted by weight gain or single criteria?			Weight Only	No
How many groups can I create for sorting livestock?	10	5	3	No
Does my indicator have automatic Tru-Test load bar recognition and calibration?				

DATA COLLECTION & RECORDING	XR5000	ID5000	EZI WEIGH 71	S3
How many individual records can I store?	1 million	250,000	20,000	No
How many weighing sessions can I keep?	1,000	250	100	No
How many custom traits can I record per animal?	100	3	1	No
Can the indicator receive data from the electronic identification (EID) reader via Bluetooth?				No
Can I link weights & other data to the animal's visual and EID on the indicator?				No

DATA TRANSFER	XR5000	ID5000	EZI WEIGH 71	S3
Is the indicator compatible with the Data Link app?				
Can I use a USB flash drive to get information off the weigh scale?			No	No
Can I use Bluetooth to transfer data recorded on the indicator to the Data Link app after session is complete?				No
Can I use Bluetooth to send weights from the indicator to the Data Link app in real-time?	No	No	No	

CALCULATIONS	XR5000	ID5000	EZI WEIGH 71	S3
Will the indicator calculate weight gain?				No
Will the indicator calculate carcass weight?			No	No
Will the indicator calculate dosage of animal health products based on weight?			No	No

EID**Readers****Tru-Test**
DATAMARS

Enhancing livestock profitability through precise and efficient data collection is achieved by tracking animals using electronic identification (EID).

Tru-Test has collaborated extensively with livestock producers to create the best-in-class range of EID readers available on the market.

Electronic Identification enables the comprehensive tracking of individual animals throughout their entire life cycle via an electronic ear tag.

By utilizing electronic tags, there is an opportunity to enhance the management of each animal's individual performance. This allows for the tracking of an animal's weight history over time, identification of both strong and weak performers, and more effective resource management to maximize profits.

With the integration of a Tru-Test scale indicator and a portable or panel EID reader, animals can be scanned at the time of weighing. Individual animal weights and other traits can be recorded and associated with each animal's unique ID number. This information is stored within the scale indicator, ready for convenient access in the field or at the office.

Features of Electronic Identification (EID)

INDIVIDUAL HEALTH
MANAGEMENT



MONITOR
PERFORMANCE



DATA RECORD
KEEPING



MAXIMIZE
PROFITS

	SRS2i	XRS2i	XRP2i
Is it portable and easily transportable to multiple locations with minimal setup?	✓	✓	No
Can data with EID/VID matched pairs be uploaded from the PC?	✓	✓	No
Is it capable of recording EID tags for branded beef programs?	✓	✓	No
Is it capable of scanning EID tags and collect customized data directly in the field?	No	✓	No
Can a stationary EID panel reader automate tag readings using a chute or working pens?	No	No	✓
Is it capable of sending EID numbers to an Indicator in real-time?	✓	✓	✓
Is the EID Reader compatible with the Antennas?	No	No	✓

ELECTRONIC IDENTIFICATION

Portable SRS2i Stick Reader

Efficiently read and record information for each individual animal.

- 250,000 tag memory
- View EID and visual tag info for accuracy confirmation
- Reads all FDX and HDX tags
- Accepts uploaded EID/VID matched pairs
- Bluetooth wireless technology for scale connectivity



880 0004-657

Portable XRS2i Stick Reader

Efficiently read, record, edit, and customize information for each individual animal.

- 1 million tag memory
- Capture up to 15 customizable pieces of information per animal
- Customizable alerts, including withdrawal periods
- Reads all FDX and HDX tags
- Accepts uploaded EID/VID matched pairs
- Alpha-numeric keypad for flexible data entry
- Bluetooth wireless technology for operation with a connected scale



880 0004-656

XRP2i Panel Reader

Tru-Test's advanced reading technology guarantees fast and reliable tag reads every session.

- Reads all FDX and HDX tags
- Functions as a standalone tag recorder and animal counter or sends tag numbers to a Tru-Test scale
- Requires a large or small antenna



880 0004-607

Small Antenna

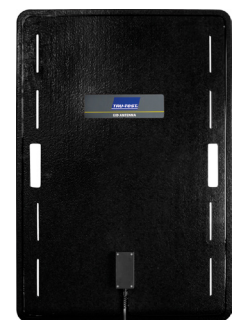
- For sheep, goats or swine
- Read distance: 3ft
- Dimensions: 16" X 17"
- Rugged design
- Easy installation
- Only compatible with the XRP2i Panel Reader



824996; 880 0000-779

Large Antenna

- For cattle or deer
- Read distance: 3ft
- Dimensions: 24" X 34"
- Rugged design
- Easy installation
- Only compatible with the XRP2i Panel Reader



824997; 880 0000-259

Improving Efficiency & Maximizing Profits



Tru-Test
DATAMARS

Data Collection Efficiency Feature Story – Fenco Farms

LeRoy Rooks presently oversees Fenco Farms, where they maintain a herd of 1,800 to 2,000 Brangus and Sim Angus commercial cows. In the previous year, Fenco Farms artificially inseminated over 900 head of commercial cows. Additionally, they operate a registered Brangus operation, employing data to enhance their livestock management decisions.

“We use our XR5000 for everything. It’s a very robust system. One of the main things we do with our animals is we set parameters for average daily gain in our feeders. The ADG function is very important on the XR5000. It shows us days vs weight to help us decide which animals qualify to go to a feedlot. Next year, we’ll be using our XR5000 to look at the mature weight of females vs weaning weights of their offspring. We try to be data conscious in our commercial operation. We record quite a bit chute side. Data is our story.”

At Datamars Livestock, our philosophy revolves around ensuring data accessibility and seamless transfer. LeRoy concurs, emphasizing the ease of extracting data from the indicator. “I do the data transfer on my phone. For example, we pregnancy checked the cows this morning. As soon as we got done, I sent the data to my analyst in Texas.”

We also endeavor to simplify the process of importing data into herd management programs for additional utilization. “Last week our analyst was here with us weighing registered calves. As soon as we got done weaning those calves, he uploaded the information to [Datamars Livestock] cloud software for his data retrieval. He also sent the CSV files to his staff so they could put the data into CattleMax.”

Recognizing the significance of data, Fenco Farms also prioritizes efficiency and accuracy. Each animal within the operation is equipped with an EID tag, ensuring that all pertinent data is recorded in the indicator alongside its electronic identification number.

Fenco Farms acknowledges the value of data not only for their immediate operational needs but also for the subsequent stages of the market cycle. “One of the most beautiful things about the XR5000 is when we’re sorting animals as feeders.

We’ll sort four or five semi loads on average daily gain, sex, body condition of the calf, etc., depending on where they are going. Tomorrow, when we load those semis, we have our XR5000 set up with some custom fields. We scan every single calf when it goes on that semi so by the time that semi lands in Kansas or Iowa, the feedyards have the EID numbers, starting weights, and average daily gain weights on everything that came off that semi.”

“We push the envelope.” Fenco Farms has also taken data one step further with DNA sampling. “We DNA sample every calf. We use Matched Sets that correspond with the DNA samples, so everything is recorded as soon as we scan the tag, and it all goes right into the XR5000.”

Fenco Farms initiated its use of Tru-Test products in 2014 with a portable EID reader. Subsequently, they acquired their first XR5000. Witnessing the robust data collection capabilities, Fenco Farms became a staunch advocate of Tru-Test. Currently, they possess two XR5000s, two stick readers, four panel readers, and three sets of load bars. “As we grow, we’re staying with Tru-Test. They have been very good to us. I had to send our XR5000 for service, and I got it back in two days. Customer Service has been excellent.”

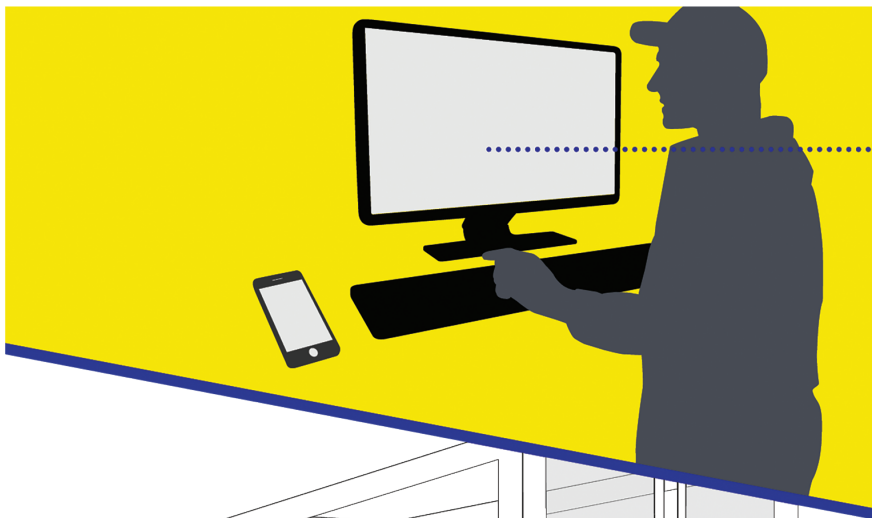
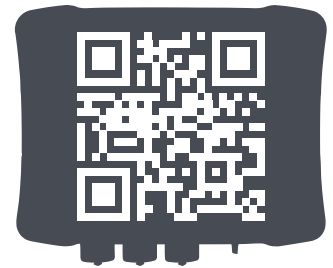
LeRoy incorporates additional products from the Datamars Livestock portfolio. “I’m a big supporter of Speedrite. We do rotational grazing on a 360-acre pivot, and we put temporary fence on it. Occasionally we throw a Patriot solar charger in there when needed.”

Datamars Livestock values the power of data and integrated animal management. The success of operations like Fenco Farms fills us with pride and motivates us to consistently provide our customers with the high-quality tools they require.

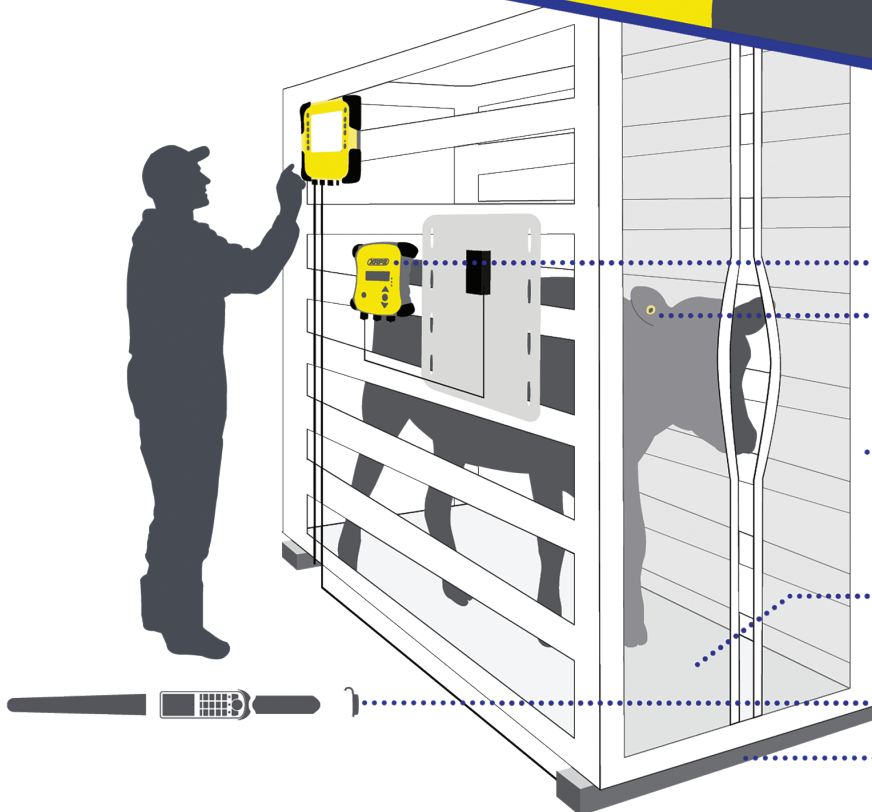
EID WEIGH SYSTEM EXAMPLE

How Weighing & EID Work Together

To find out more and see our weighing and EID products in action, VISIT our YouTube page ▶▶



DATA
MANAGEMENT
& REPORTING



FIXED EID
READER

EID EAR TAG

WEIGH SCALE

PLATFORM

PORTABLE
EID READER

LOAD BARS

Load Bars

Tru-Test
DATAMARS

Tru-Test load bars are recognized as the most reliable, rugged, and durable options, featuring internal load cells made of aircraft-grade aluminum for superior resistance to corrosion.

Additionally, heavy-duty TPR/PVC cables are employed to minimize the risk of cable damage. Both our multi-purpose and heavy duty load bars guarantee accuracy within +/- 1%. To ensure longevity, Tru-Test load cells are fully enclosed, providing protection against dirt, moisture, and rodents.

Features of Load Bars



RUGGED &
DURABLE DESIGN



HIGH-QUALITY
GUARANTEE



ACCURACY

	MP600	MP800	HD5T
Weigh show livestock in a crate or on a platform	✓	✓	No
Weigh sheep or goats in a crate or alleyway system	✓	✓	No
Weigh cattle in a stationary alleyway on a platform	✓	✓	No
Weigh cattle in a portable application using a platform	✓	✓	No
Weigh cattle in a manual chute	No	No	✓
Weigh cattle in a hydraulic chute	No	No	✓
Weigh horses in a breeding/equestrian program	No	✓	No

LOAD BARS

MP600 Load Bars

Compatible with any Tru-Test scale indicator.

- 23" Long
- 4,400 lbs Capacity
- Corrosion-resistant design featuring a galvanized steel housing that safeguards the bar.
- Equipped with rubber feet for enhanced grip and shock protection.



805122; 880 0000-202

MP800 Load Bars

Compatible with any Tru-Test scale indicator.

- 32" Long
- 6,600 lbs Capacity
- Corrosion-resistant design featuring a galvanized steel housing that safeguards the bar.
- Equipped with rubber feet for enhanced grip and shock protection.



805123; 880 0000-240

HD5T Load Bars

Compatible with any Tru-Test scale indicator.

- 39" Long
- 11,000 lbs Capacity
- Easy Installation: Bolt it to the chute, then secure it to the concrete surface.
- Increased Capacity: The heavy-duty load bar, with an 11,000 lb capacity, is suitable for mounting even the heaviest chutes.
- Stable & Secure Load Cell: No movement observed when installed under the chute, ensuring a static installation.



833749; 880 0003-773

Platforms



Tru-Test
DATAMARS

Tru-Test platforms are crafted with a focus on durability, animal safety, and portability.

Designed to withstand constant use, our lightweight platforms are also portable, making them suitable for seasonal weighing or for use across multiple sites. These platforms are specifically tailored to accommodate Tru-Test's industry-leading load bars.

Features of Platforms



ROBUST &
DURABLE DESIGN



PORTABILITY



LIVESTOCK
SAFETY



EASE OF USE

	SMALL	WP600	AP600/800
Weigh small/show livestock or calves		No	No
Weigh show cattle, occasionally outdoors but usually in a barn or under a covering	No		
Lightweight, portable platform to move between cattle working sites	No	No	
Weigh cattle in an alleyway system designed for a commercial, high volume operation	No	No	

PLATFORMS

Small Animal Platform

- 24" (W) X 48" (L)
- Recommended for use with MP600 Load Bars
- Designed for pigs, goats, sheep, and calves
- Lightweight and portable
- Non-skid grit tape for traction



831740; 880 0003-424

WP600 Platform

- 24" (W) X 72" (L)
- Recommended for use with MP600 Load Bars
- Designed for show cattle
- Lightweight and portable
- Steel and wood construction
- Low profile design
- No sharp edges



834477; 880 0003-441

AP600 Platform

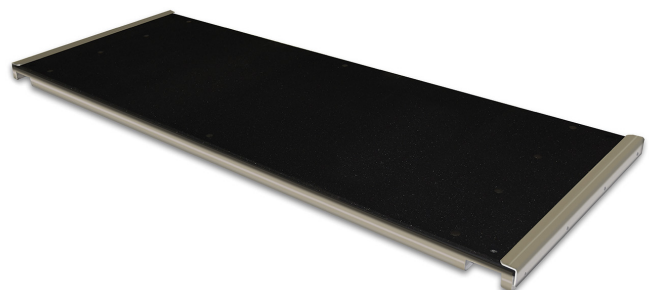
- 24" (W) X 87.5" (L)
- Recommended for use with MP600 Load Bars
- Designed for alleyways & portable applications
- Low profile design
- No sharp edges
- Rubber traction mat for noise reduction



821723; 880 0003-293

AP800 Platform

- 34" (W) X 87.5" (L)
- Recommended for use with MP800 Load Bars
- Designed for alleyways & portable applications
- Low profile design
- No sharp edges
- Rubber traction mat for noise reduction



821724; 880 0003-294

WEIGHING ACCESSORIES

5000 Series Power Adaptor†

- For 5000 series scales
- Included:
Multi-region AC adaptor



826639; 880 0000-453

XRP2i Power Adaptor†

- For XRP2i EID panel reader
- Compatible for Australian/NZ, European, UK, and US power leads



825646; 880 0000-604

Power Adaptor & USB Cable†

- For EziWeigh7i indicator
- Included:
Multi-region AC adaptor



818348; 880 0000-869

5000 Series Plastic Carry Case†

- Tough & durable
- For 5000 Series scale indicator



824574P ; 880 0002-165

Fixed Mounting Bracket†

- For use to mount Tru-Test scale indicators or XRP2i EID panel reader on flat surface or pipe



WIH80001; 880 0000-518

5000 Series 12V Charging Kit

- For 5000 series scales
- Includes: 12V Adaptor connection (vehicle or battery)



827195; 880 0000-322

XRP2i 12V Power Cable†

- For XRP2i EID panel reader



825644; 880 0000-510

XRS2i & SRS2i Charging kit

- For XRS2i, SRS2i, & ERS EID readers
- Includes: 5V Multi-region adaptors & USB Cable



832382P, 880 0003-455

XRS2i & SRS2i Carry Bag†

- Polyester material
- For XRS2i & SRS2i EID stick readers and accessories
- Includes: Foam padded inside pocket & shoulder strap



830723P; 880 0000-536

Adjustable Mounting Bracket

- For use to mount Tru-Test scale indicators or XRP2i EID panel reader on flat surface or pipe



826641; 880 0000-754

S3 Indicator Mounting Bracket†

- For mounting on a flat surface or pipe
- Included with S3 Indicator
- Hardware is not included



833979P; 880 0002-732

Cable C16 to D9 Serial and '5V DC' C16

- For 5000 Series indicator usage
- Provides 2 serial connection ports enabling simultaneous battery charging



826638; 880 0000-665

USB to Serial Adaptor Cable†

- Connects the PC to EID panel or EID stick reader



824429P; 880 0000-894

XRP2i Serial Cable†

- Connects the XRP2i EID panel reader to scale indicator and other devices



825643; 880 0000-828

Cable USB Series A to Mini-B†

- Connects the PC to 5000 Series indicators, XRS2i & SRS2i EID stick readers



834892P; 880 0002-615

XRP2i Antenna Extension Cable†

- 18' long
- For XRP2i EID panel reader



825649; 880 0000-306

USB Cable - USB A to Micro B

- Used for S3 indicator charging



833978P; 880 0002-731

Cable C16 to D9 Serial

- Connects 5000 Series indicators & EziWeigh7i indicator to EID stick reader



818324; 880 0000-371

Data Management & Reporting

Tru-Test[™]
DATAMARS

Powerful Weight Management Software

Datamars Livestock cloud software provides access to weight data that can be viewed and shared from any device. Visual dashboards simplify complex information into simple graphs and charts, enabling you to make quick, fact-based decisions.

Datamars Livestock Cloud Software

Datamars Livestock provides an online software suitable for all types of livestock. It transforms your data into clear, useful information, allowing you to monitor weight gains, track performance to target weights, and identify top and bottom performers through simple graphs and charts. *The software is free with purchase of Datamars Livestock products.*

- Organize all livestock data in one place for easy access.
- Effortlessly transfer data from Tru-Test scales or Data Link app
- Instantly share weight data
- Easily sort and filter data by various criteria
- Download reports and graphs in common formats
- Cloud backup for sessions
- Accessible from any device with internet
- Receive software update notifications
- Built-in support features available

Example of Charts and Graphs



SOFTWARE & COMPATIBILITY

Data Link app for Smart Devices

Datamars Livestock Data Link, a free app for Apple iOS and Android, lets you easily download data from your Tru-Test WiFi and Bluetooth® enabled EID readers or scale indicators.

- Send session data to Datamars Livestock for tracking and sharing reports.
- Email session files to the office or other recipients.
- Open and review individual livestock records within a session.
- Automatic upload of sessions when 3G or WiFi coverage is restored.



Data Link app for Windows PC

- Connect Tru-Test EID reader and scale to your Windows PC.
- Easily download and upload recorded information.
- Use PC Data Link for device software updates.
- Send session data to Datamars Livestock.

Screen Link app

- Share real-time weighing information on your Android devices to view animal weights remotely.



DATALINK APP COMPATIBILITY	IOS	ANDROID
XR5000 & ID5000	✓	✓
EziWeigh7i	✓	✓
S3	✓	✓
XRS2i & SRS2i	✓	✓
XRP2i	✓	✓

DATAMARS
Livestock™



Animal

Identification

Premium Long-term Livestock Identification Tags

Recommended. Trusted. Quality.

For over 30 years, Z Tags has been supplying producers with identification tools. The product line includes visual tags, electronic identification (EID) tags, and innovative applicators designed to simplify, enhance safety, and improve efficiency in livestock tagging. Z Tags provides high-quality livestock identification tags and applicator devices tailored to meet the needs of your operation. We recommend combining Z Tags with our Tru-Test products for a comprehensive identification and livestock management solution.

LEARN MORE: ZTAGS.COM

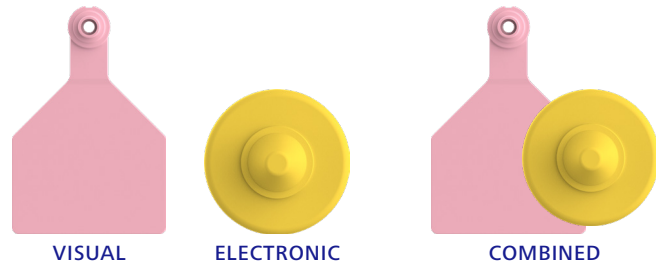
SELECTING A TAG

A crucial component to building an effective livestock management system is to have reliable, durable animal identification. Z Tags provide a variety of tools for visual and electronic identification. Our newest addition, the Tissue Sample Tag, also incorporates the latest technology for collecting genetic testing samples (refer to page 32 for more information).

These steps will help you select the best identification tools to meet your operation's needs.

1: Identification Method

The initial step in selecting your identification method is to decide on your approach. Visual (VID) tags are optimal for readability, particularly from a distance. Electronic (EID) tags enhance data collection and traceability, offering improved accuracy and efficiency. Combining both in a matched pair set creates a comprehensive management system.



2: Types of Tags

Next, consider the type of tag you prefer. Z Tags provides premium one-piece and two-piece visual tags, along with two types of EID tags (Full Duplex—FDX or Half Duplex—HDX). For a Matched Set, you can combine a VID and EID tag.



3: Tag Size & Animal Type

The species of the animal being tagged will assist you in selecting the appropriate size of visual tag. Both one-piece and two-piece tags are available in various sizes.

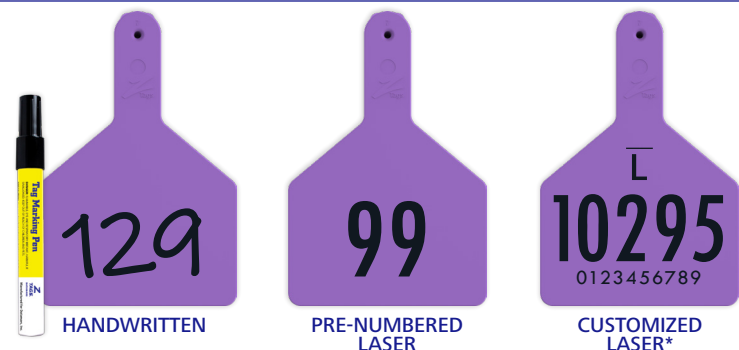
NOTE: EID tags can be utilized for any livestock species.



4: Marking Options & Color
















Z Tags Z1 No-Snag-Tags and Stockman Two-piece visual tags can be marked using either the Tag Marking Pen or laser printing. We also provide pre-numbered, laser-printed tags for convenience. Visual tags are available in a variety of colors.

For marking options details, see page 35.



*NOTE: The customized laser layout featured here is provided as an example. Restrictions apply to the final layout. Contact customer service for full details.

TAG COMPARISON CHART

	Tag Size	LIVESTOCK TYPE	MARKING OPTIONS	LIVESTOCK TYPE
Z1 No-Snag-Tags One-piece	Cattle		Handwritten with Tag Marking Pen, Pre-numbered or Laser	Visual
	Longneck Calf			
	Calf			
	Small Animal			
Stockman Two-piece	Cattle		Handwritten with Tag Marking Pen, Pre-numbered or Laser	Visual
	Calf			
	Small Animal			
Tissue Sampler Tag (TST)	Cattle		Laser	Visual
Tissue Sampler Only (TSO)	Cattle		Laser	Visual
ComfortEar Slim F4Z	Half Duplex (HDX)		Pre-printed Only	Electronic ID
	Full Duplex (FDX)			
F4S	Half Duplex (HDX)		Pre-printed Only	Electronic ID
	Full Duplex (FDX)			
Original Punch Tag	Small		Embossed Hot Stamp*	Visual
	Large			

EID &

Matched Sets



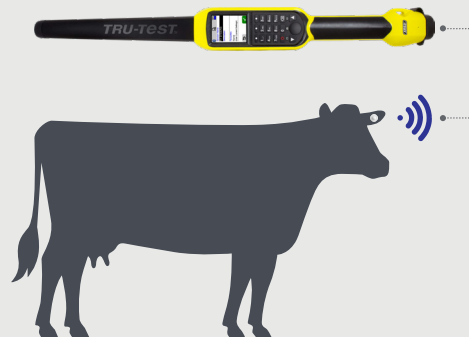
Electronic Identification (EID) tags also known as Radio Frequency Identification Tags (RFID). ComfortEar® Slim F4Z and F4S offer everything in a state-of-the-art RFID ear tag.

- ✔ **Superior Readability:** Industry-leading read distance, depending on reader quality and environmental factors.
- ✔ **ICAR Approved:** Meets standards established by the International Committee for Animal Recording (ICAR), the worldwide organization of animal recording and productivity evaluation.
- ✔ **Tamper Evident Design:** Ensures security in livestock management programs.
- ✔ **Lightweight & Low Profile:** Lightweight works in animals of all ages and is ideal for young animals with tender ears. Slim design allows the tag to fit uniformly against the ear to prevent snagging.
- ✔ **ISO Compliant:** Conforms to standards established by the International Organization for Standardization (ISO) – the world’s foremost developer of quality standards.

How EID Technology Works

- EID tags emit a low-frequency signal that can be read by a Portable Stick Reader, Panel Reader, or using an Antenna
- EID numbers, like VIDs, are unique to each animal
- Enhances efficiency and accuracy of data collection
- Collecting electronic data reduces data entry errors
- EID numbers can be matched with VID numbers using an EID Stick Reader
- EID stores and transmits only the number; all other data is collected and stored in the cloud-based software

See page 16 for EID Reader details.



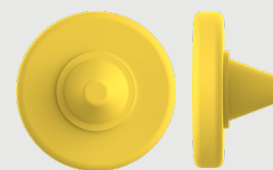
ComfortEar® Slim F4Z

For all livestock species.

- Available in FDX and HDX.
- Approved for USDA 840 cattle programs
- Laser printed
- Dimensions: 1 1/8" Diameter
- Weight: HDX = 6.3g; FDX = 4.2g
- 134.2kHz Frequency



HALF DUPLEX



FULL DUPLEX



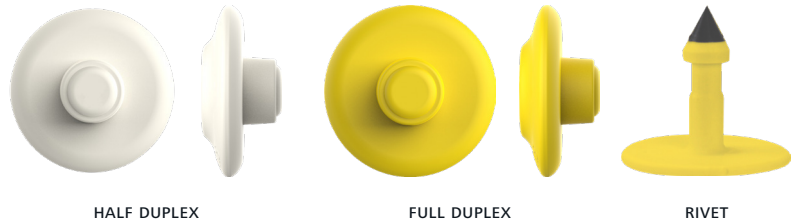
RIVET

EID TAGS

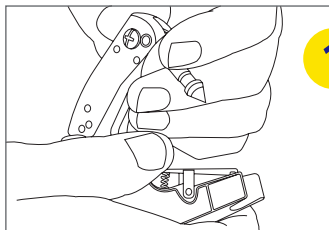
F4S

For all livestock species.

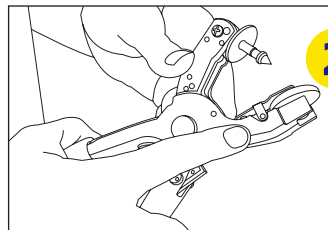
- Available in FDX and HDX.
- Approved for USDA 840 cattle programs
- Laser printed
- Dimensions: 1 1/4" Diameter
- Weight: HDX = 6.3g; FDX = 4.5g
- 134.2kHz Frequency



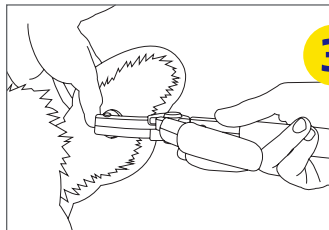
EID Assembly Instructions



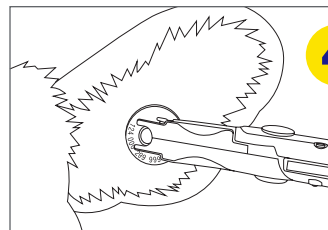
1 Push the male button completely onto the tagger pin. The button will stay in position.



2 Depress the spring clamp and insert the ComfortEar EID tag. Insert the EID tag all the way to the stop.



3 Position the tag between the two main cartilages, approximately halfway between the animal's head and the ear tip. Squeeze the tagger handles firmly to apply the tag.



4 Slightly release grip pressure and pull tagger away from the ear. When the male and female tags have locked together, the tagger jaws will pop open in a reflex action (and the pin may flip out), releasing the tag without tearing the animal's ear.

Compatible Tag Applicators & Tag Marking Pen:

Universal Tagger



700 0800-119

Z2 No-tear Tagger™
(Not compatible with F4S)



930 0100-225

Tissue Tagger



800 0800-123

Herdsman II Tagger



930 0200-975

Tag Marking Pen



700 2500-239

MATCHED SETS

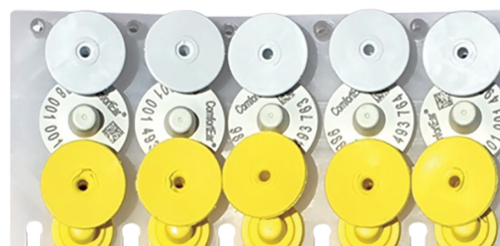
Matched Sets

Matched Sets are a combination of an Electronic Identification (EID) tag and a Visual Identification (VID) tag. EID tags greatly improve the livestock tracking and identification processes to assist with traceability and disease control. Each Matched Set visual tag is printed with the unique, corresponding EID number. VID tags can also be printed with large managed numbers or custom marking options (see page 35).

	ComfortEar Slim F4Z		F4S	
	HDX	FDX	HDX	FDX
Weight	6.3gm	4.2gm	6.3gm	4.5gm
Dimensions	1 1/8" Diameter; 0.62"(D)		1.18" Diameter; 0.54"(D)	
Compliance	ISO 11784 & ISO 11785		ISO 11784 & ISO 11785	
Radio Frequency	134.2 kHz		134.2 kHz	
Print	Laser		Laser	
Read Distance (optimal reading conditions)	14.17" Stick Reader 41" Antenna	13" Stick Reader 32.3" Antenna	14.17" Stick Reader 41" Antenna	13" Stick Reader 31.5" Antenna
Rivets Included	✔		✔	
Species	Goats, Sheep, Swine, Cattle		Goats, Sheep, Swine, Cattle	
Material	Polyurethane		Polyurethane	

Z1 No-Snag-Tags Visual Tag

- Superior retention
 - Exceptional readability
 - Quick healing
 - Designed for fast tagging
 - Sizes: Cow, Calf, Longneck Calf & Small Animal
- See page 26 for Z1 details.



Stockman Two-piece Visual Tag

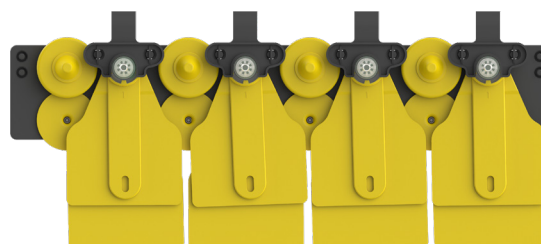
- Exceptional readability
 - Superior durability
 - Flexible material prevents ripped ears
 - Tamper Evident Option
 - Sizes: Cow, Calf & Small Animal
- See page 29 for Stockman details.



Tissue Sample Tag

- Exceptional readability
- Superior durability
- Flexible material prevents ripped ears
- Sizes: Cow, Calf & Small Animal

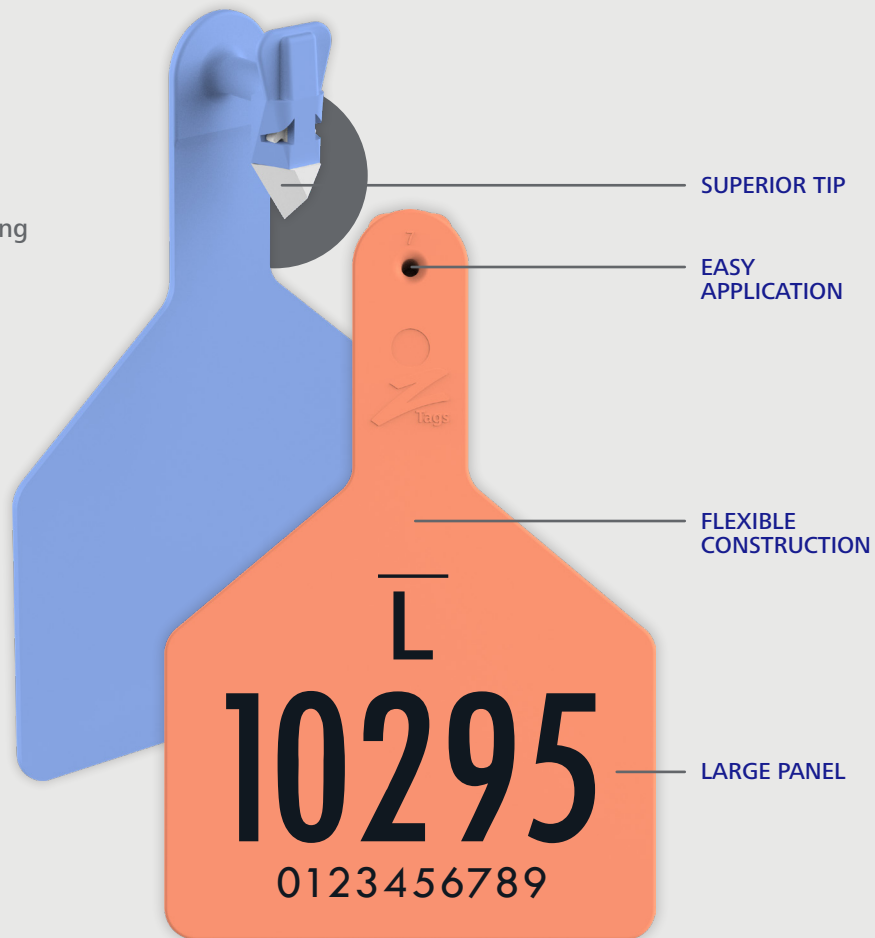
See page 32 for Tissue Sample Tag details.



Z1**No-Snag-Tags™**

The original and industry-leading one-piece tag on the market.

- ✔ Superior Retention
- ✔ Exceptional Readability
- ✔ Fast Healing
- ✔ Designed for Fast Tagging
- ✔ Multiple Sizes & Colors
- ✔ Available in Blanks, Pre-Numbered 1–200 or Custom Print



- ✔ **Superior Tip:** Features a sharp tip that facilitates a surgical cut, resulting in faster healing compared to a puncture wound caused by forcefully punching the tag through the ear.
- ✔ **Large Panel:** A large visual panel for custom laser print or handwritten with Tag Marking Pen.

- ✔ **Easy Application:** Flexible material for easy loading on to the Z1 No-Snag-Tagger.™
- ✔ **Flexible Construction:** Durable to avoid ripped ears, tangled ears or tags snapping off during cold months.

Z1 NO-SNAG-TAGS

Z1 No-Snag-Tags



Available Colors Left to Right:
Turquoise, Chartreuse, Blue, Green, Red, Purple, Pink, Orange, White, and Yellow. NOTE: Chartreuse and Turquoise are not available in Small Animal tag sizing. Actual tag pantone colors may vary from this book.

Sizing

<p>COW</p> <p>4 3/8"</p> <p>3"</p>	<p>LONGNECK CALF</p> <p>3 3/8"</p> <p>2 1/2"</p>	<p>CALF</p> <p>3 1/4"</p> <p>2 1/2"</p>	<p>SMALL ANIMAL</p> <p>2 1/4"</p> <p>1 3/4"</p>
<p>COW TAG (S208): Bull, Cow or Calf recommended</p>	<p>LONGNECK CALF TAG (S206): Long-haired breed recommended</p>	<p>CALF TAG (S207): Cow or Calf recommended</p>	<p>SMALL ANIMAL TAG (S205): Sheep, Goats or Calf recommended</p>

Compatible Tag Applicator & Tag Marking Pen:

Z1 No-Snag-Tagger



930 0100-005

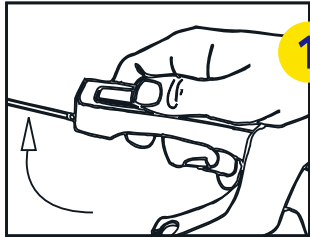
Tag Marking Pen



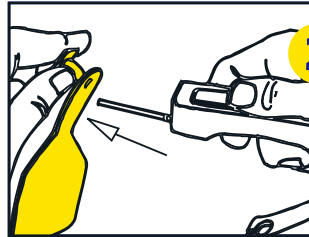
700 2500-239

ASSEMBLY INSTRUCTIONS

Z1 No-Snag-Tag Assembly Instructions



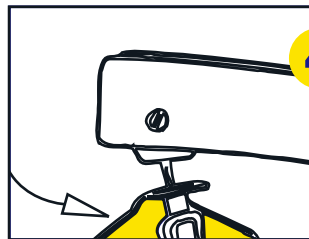
1 Flip tagger pin up to tag loading position.



2 Insert pin into tag.



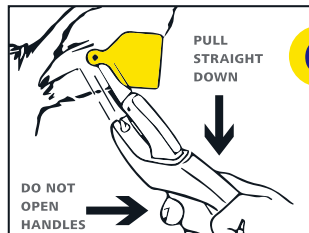
3 Straighten self-piercing tip and push down onto pin. Make sure the tag is fully seated on the pin.



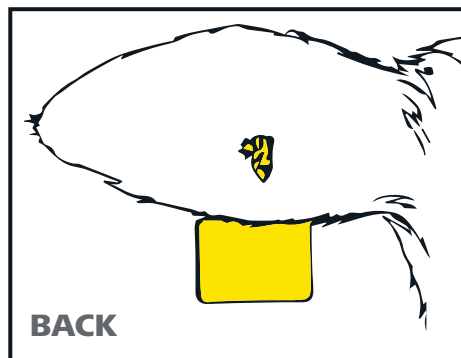
4 Rotate tag to the side. Flip the tagger pin down into tagging position.



5 Tag through the front of the ear only. To apply tag, squeeze handles firmly together and hold closed.



6 Pull Z Tags tagger straight down and away from the ear in one single motion. DO NOT RELEASE HANDLES AT ANY POINT DURING THIS STEP. The pin automatically flips up to eliminate ripped ears.



A PROPERLY INSERTED TAG SHOULD LOOK LIKE THIS.

NOTE: See compatibility taggers for proper retention on page 27.

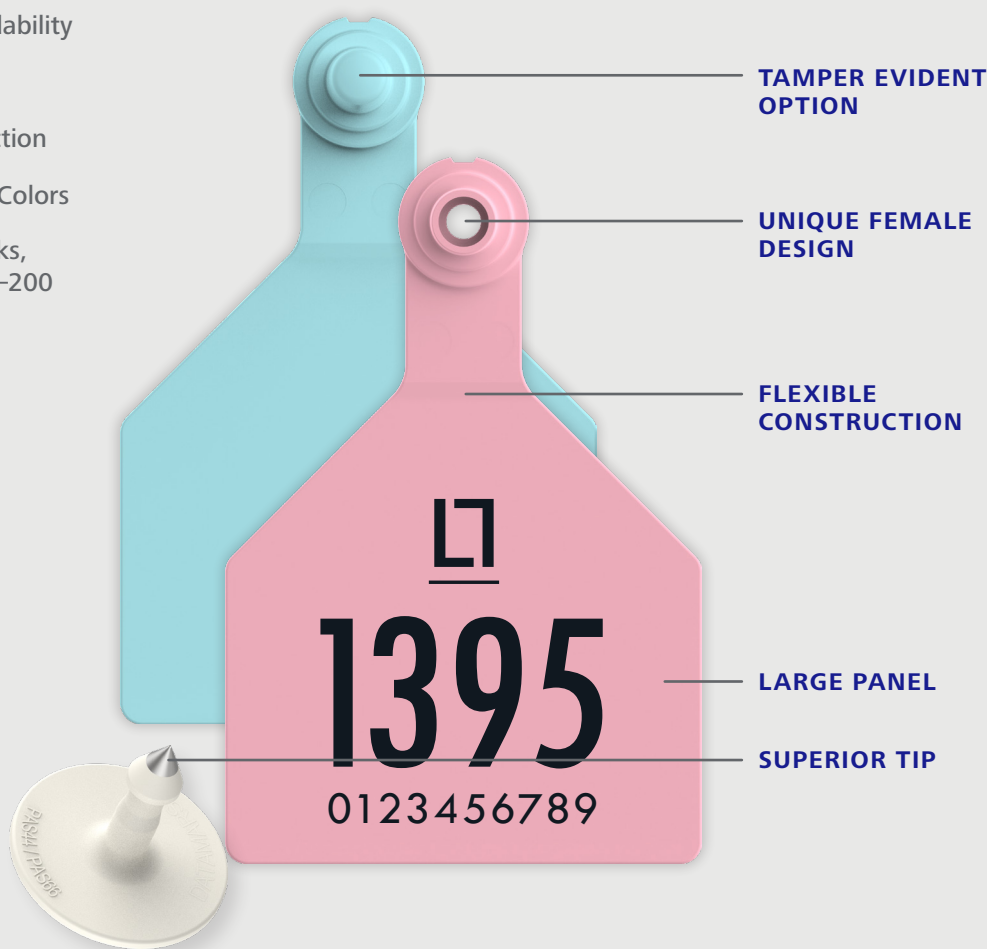
Stockman

Two-piece Tags



The premium two-piece tag for superior retention.

- ✔ Exceptional Readability
- ✔ Fast Healing
- ✔ Flexible Construction
- ✔ Multiple Sizes & Colors
- ✔ Available in Blanks, Pre-Numbered 1–200 or Custom Print



- ✔ **Unique Female Design:** The female design freely rotates around the rivet to prevent torn ears and quicker healing.
- ✔ **Tamper Evident Option:** Recommended for branded beef or similar value-added programs.
- ✔ **Large Panel:** A large visual panel for custom laser print or handwritten with Tag Marking Pen.

- ✔ **Superior Tip:** Features a sharp tip that facilitates a surgical cut, resulting in faster healing compared to a puncture wound caused by forcefully punching the tag through the ear.
- ✔ **Flexible Construction:** Durable to prevent torn ears or tags breaking off due to cold weather.

STOCKMAN TAGS

Stockman Tags

- Unique female (F413 R) design freely rotates around the rivet to prevent torn ears and quicker healing.



Available Colors Left to Right:
 Yellow, White, Light Orange, Orange, Light Pink, Pink, Red, Light Green, Green, Light Blue, Blue,
 Light Purple and Purple. NOTE: Actual tag pantone colors may vary from this book.

- Tamper Evident option (F413 TE) is recommended for branded beef or similar value-added programs.



Available Colors Left to Right:
 Yellow, White, Light Orange, Orange, Light Pink, Pink, Red, Light Green, Green, Light Blue, Blue,
 Light Purple and Purple. NOTE: Actual tag pantone colors may vary from this book.

Sizing



COW TAG (F413):
 Bull, Cow or Calf
 recommended



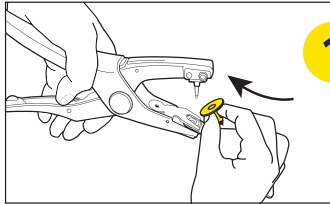
CALF TAG (F412):
 Cow or Calf
 recommended



SMALL ANIMAL TAG (F411):
 Sheep, Goats or Calf
 recommended

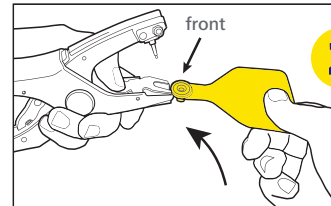
ASSEMBLY INSTRUCTIONS

Stockman Tags Assembly Instructions



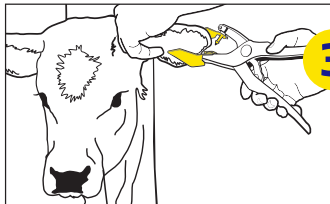
1

Push the matching male rivet or male panel up onto the tagger pin in the upper jaw.



2

Insert a female tag (front facing down) under the holding clamp in the lower jaw of the tagger.



3

Position the tag between the two main cartilages, approximately halfway between the animal's head and the ear tip. Squeeze the tagger handles firmly closed. When the male and female tags have locked together, the tagger jaws will pop open in a reflex action (and the pin may flip out), releasing the tag without tearing the animal's ear.

NOTE: See compatibility taggers for proper retention below.

“I recommend Z Tags to my customers for all of their program cattle. They are easy-to-use, easy-to-read, and they always stay in.”

MARK FREEMAN
Superior Livestock Representative

Compatible Tag Applicators & Tag Marking Pen:

Universal Tagger



700 0800-119

Z2 No-tear Tagger



930 0100-225

Tissue Tagger



800 0800-123

Herdsmen II Tagger



930 0200-975

Tag Marking Pen



700 2500-239

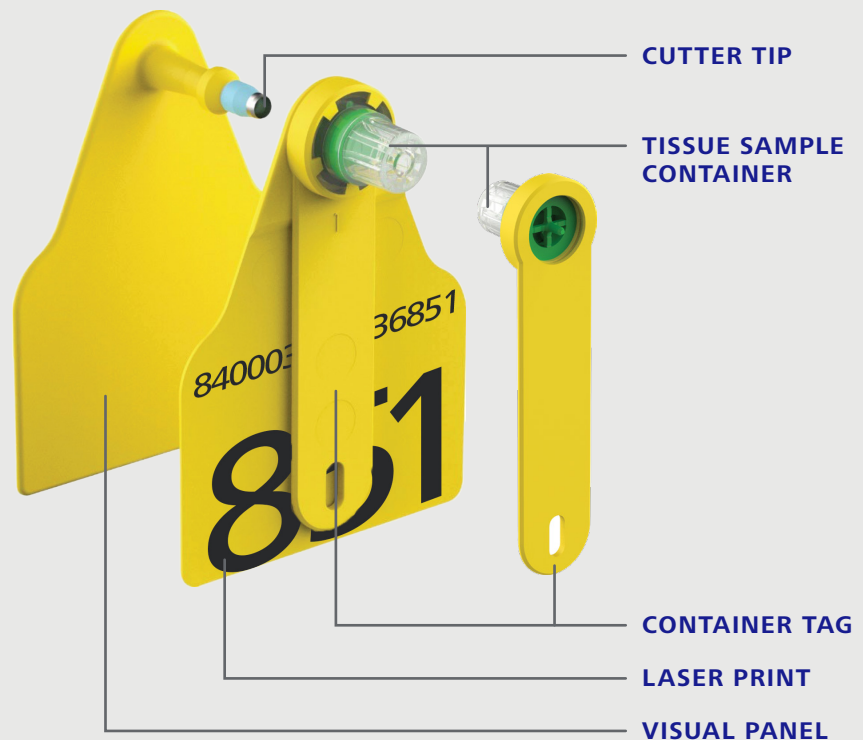
Tissue Sampler Tags



The industry-leading design in tissue collection technology.

Our dry desiccant is proven to preserve a higher quality sample that can be stored up to 6 months at room temperature.

- ✔ **Sampler Container:** Reduces risk of sample destruction
- ✔ **Container Tag:** Easy to record barcodes and organize for choice of laboratory destination
- ✔ **Easy-to-handle:** in a farm environment
- ✔ **Cutter Tip:** Superior precision cutting design for quick, clean tissue sampling
- ✔ **Visual Tag:** Easily apply visual tag while collecting tissue sample
- ✔ **Longevity:** Yellow lifetime tags are laser printed



TISSUE SAMPLER TAGS

Tissue Sampler Tag – TST (MF13)

Appropriate for cattle requiring both a management tag and a sample collection.

- Custom Laser printed
- Dimensions: 2 1/4" (H) X 3" (W)

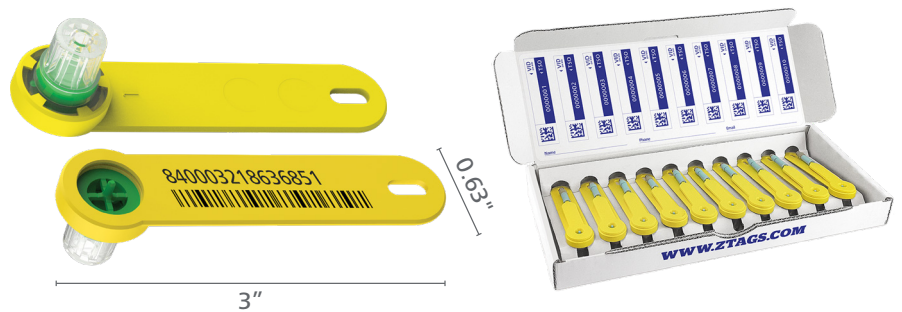


Tissue sample is placed directly into a vial containing desiccant. The vial is pre-labeled with a scannable unique barcode, which corresponds to an animal's ID. This barcode can be matched with either RFID tags or Visual ID tags.

Tissue Sampler Only – TSO (MF15)

Applicable to livestock already equipped with either a visual tag, electronic ear tag or where a visual tag is not required.

- Laser printed
- Pack of 10 Samples
- Dimensions: 3" (H) X 0.63" (W)



Tissue sample is placed directly into a vial containing desiccant. The vial is pre-labeled with a scannable unique barcode, which corresponds to an animal's ID. This barcode can be matched with either RFID tags or Visual ID tags.

Compatible Tag Applicator & Tag Marking Pen:

Tissue Tagger



800 0800-123

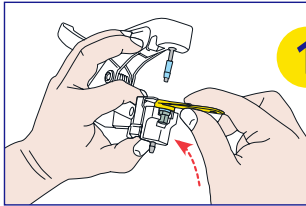
Tag Marking Pen



700 2500-239

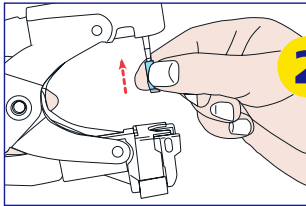
ASSEMBLY INSTRUCTIONS

Tissue Sampler Only (MF15) Assembly Instructions



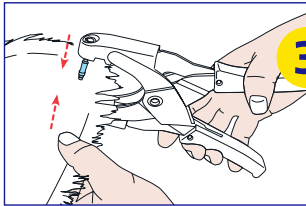
1

On the bottom jaw, push the metal plate up and slide the sample vial underneath it. Clip the sample vial flag onto the tagger lug. Partially close the tagger to ensure that the male cutter tip is centered with the female sample vial. **DO NOT FULLY FASTEN THE TAG!**



2

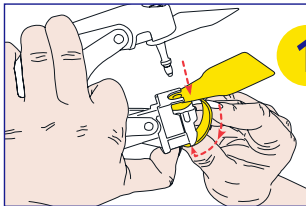
Load the gray cutter tip onto the tagger pin, holding it from the base, not from the tip.



3

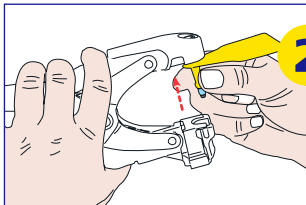
Determine location on the ear to collect the sample. Compress the tagger handles completely to take the sample.

Tissue Sampler Tag & Visual Tag (MF13) Assembly Instructions



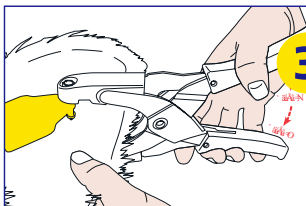
1

On the bottom jaw, push the metal plate up and slide the sample vial and female tag underneath it. (Sample vial and female tag need to be fastened together.) Clip the sample vial flag onto the tagger lug. Position the female tag to the side. Partially close the tagger to ensure that the male cutter tip is centered with the female sample vial. **DO NOT FULLY FASTEN THE TAG!**



2

Load the gray cutter tip onto the tagger pin, holding it from the base, not from the tip.



3

Position the tag in the middle of the ear with the male tag facing the back of the ear. Compress the tagger all the way through the ear to feel a double click. A double click confirms that the sample was taken and the tag was applied.

NOTE: See compatibility taggers for proper retention on page 33.

Tag Marking

Options



Handwritten with Tag Marking Pen

- ✔ Apply two coats for long-lasting results



Pre-numbered Laser

- ✔ Assured readability for the animal's lifespan.
- ✔ Recommended printing type



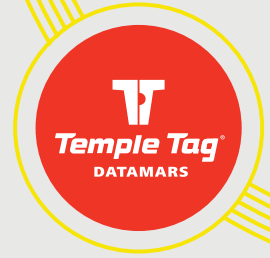
Custom Laser*

- ✔ Assured readability for the animal's lifespan.
- ✔ Recommended printing type



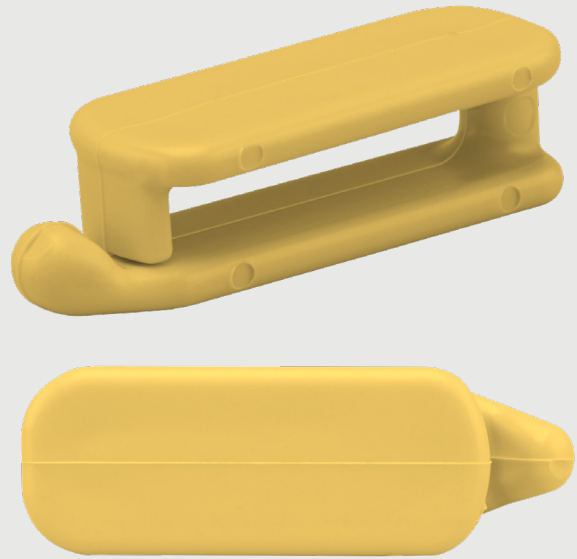
*NOTE: The customized laser layout featured here is provided as an example. Restrictions apply to the final layout. Contact customer service for full details.

The Original One-piece Tag

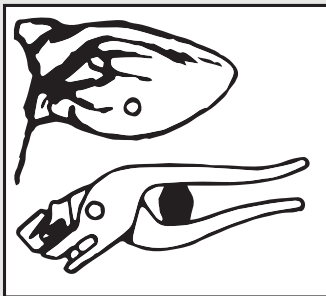


The original hard plastic, snag-proof tag.

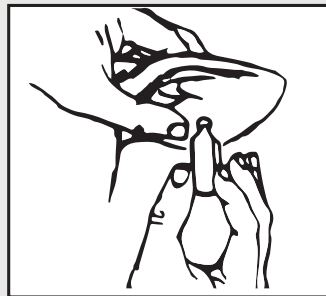
- ✔ **Exceptional Construction:** Crafted from a weather-resistant polymer with a permanent color, this material is resistant to cracking, freezing, or fading. It boasts an expected lifespan of up to 20 years.
- ✔ **Classic Design:** Featuring snag-proof, open-end construction, this design enables the tag to disengage from fences or brush without causing any damage to either the tag or the ear.
- ✔ **Versatile:** Swift, simple, and permanent—ideal for hospital tagging.



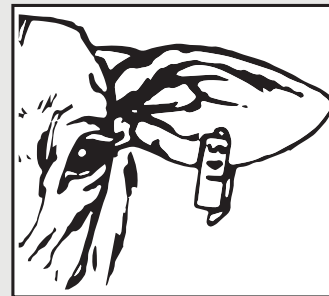
ASSEMBLY INSTRUCTIONS



- 1** Punch hole in ear using the Original Punch Tagger.



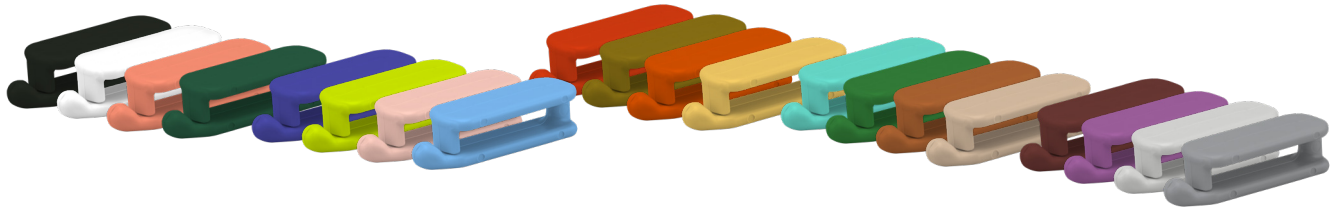
- 2** Apply Original Tag by feeding long round end down through hole.



- 3** Original Tag hangs with split ends facing down.

ORIGINAL ONE-PIECE TAG

Original One-piece Tag

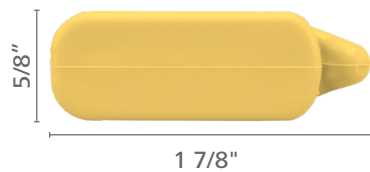


Available Colors Left to Right:

Black, White, Salmon, Dark Green, Royal Blue, Chartreuse, Blue, Red, Gold, Orange, Yellow, Turquoise, Green, Brown, Tan, Maroon, Purple, Gray and Silver

NOTE: Actual tag pantone colors may vary from this book.

Tag Sizing



LARGE:

Bull, Cow or Calf
recommended



SMALL:

Sheep, Goat or Calf
recommended

Printing Options

- Lifespan: 4 years
- Sequential numbers:
 - Hot Stamped ONLY
 - Black or White Print
 - Can ONLY have 1 line if printing sequential numbers
- Large Original Tag Maximum Characters:
Up to 2 lines and 10 digits or letters (front and back)
- Small Original Tag Maximum Characters:
Up to 2 lines and 8 digits or letters (front and back)
- Any name or phone number will be debossed

LARGE



Hot Stamp Example

SMALL



Debossed Example

Compatible Tag Applicator:

Original Punch Tagger



700 2001-674

- Classic Design
- Easy-to-use applicator
- Makes a punch to feed tag
- To apply tag, place ear in the opening shown and then squeeze handle.

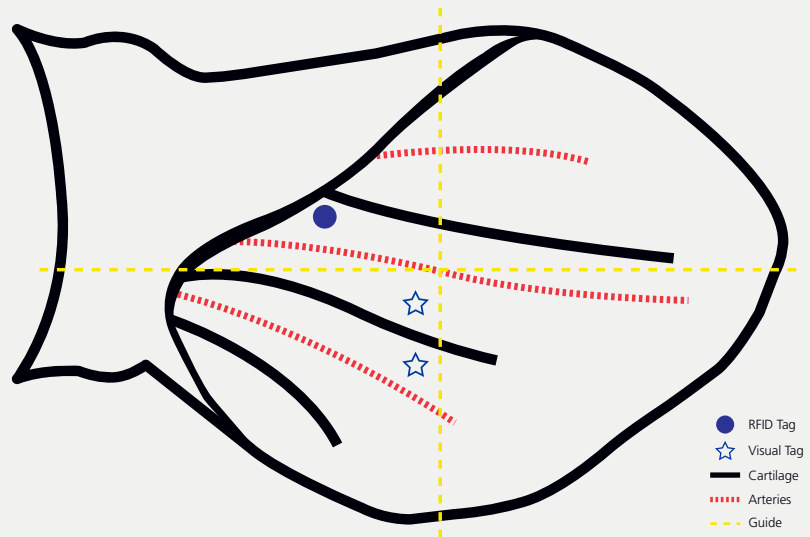


Tips for Tag Retention

For superior tag retention, heavy tags **SHOULD NOT** be used on smaller or younger livestock. **ALWAYS** support the ear when tagging, especially newborn livestock. Remove twine from hay bales to minimize snagging.

✔ Proper Tag Placement: Tags always go in the Left ear.

1. Always make a **NEW** hole.
2. Always use **NEW** tags.
3. Avoid penetrating cartilage and blood vessels.
4. Always use clean equipment for disease control.
5. If applying two-piece tags, make sure the rivet is on the **BACKSIDE** of the ear.
6. Proper healing is key to tag retention – **BE CAREFUL NOT** to tear the ear when applying tags.



NOTE: For official government programs, please consult the program regulations regarding tag placement.

“Z Tags are quality products that are extremely durable. This is the easiest tagging system we’ve ever used!”

JIM DOBSON
Dobson Ranch; Kaw City, Oklahoma

APPLICATORS & ACCESSORIES

Z1 No-Snag-Tagger Applicator

- Lightweight
- Durable
- Compatible with Z1 One-piece tags (page 26)
- Eliminates ripped ears
- Tagger includes spare pin



930 0100-005

Z2 No-Tear-Tagger Applicator

- Dual-action, kick-back jaw with flip-out pin
- Eliminates ripped ears
- Quick healing
- Superior retention
- Ergonomic handle
- Superior durability
- Compatible with F4Z and Stockman tags (pages 23 & 29)



930 0100-225

Herdsman II Tagger Applicator

- Compatible with F4S & F4Z and Stockman tags (page 23 & 29)



930 0200-975

Universal Tagger Applicator

- Powder-coated Alloy for superior durability
- Lock closes
- Compatible with F4S, F4Z and Stockman tags (pages 23 & 29)



700 0800-119

Tissue Tagger Applicator

- Quick & clean tissue collection applicator
- Easy-to-load feature
- Time-saving application of visual tag and taking tissue sample
- Compatible with F4S, F4Z, Stockman and Tissue tags (pages 23, 29 & 32)



800 0800-123

Original Punch Tagger Applicator

- Classic Design
- Easy-to-use applicator
- Makes a punch to feed tag
- Compatible with the Original Punch Tag ONLY (page 36)



700 2001-674

Multi-cutter

- Quick, safe and efficient tag, twine, latex bands and other materials removal
- Dual-razor blade design
- Easy-to-use
- Finger guard feature
- Large hilt prevents slipping



700 2401-174

Universal Tagger Replacement Pin

- Exclusive use for Universal Tagger



300 0100-063

Z1 No-Snag-Tagger Replacement Pin

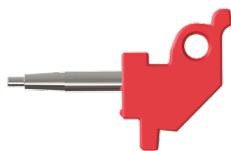
- Exclusive use for Z1 No-snag Tagger



700 2500-963

Z2 No-Tear-Tagger Replacement Pin

- Exclusive use for Z2 No-tear Tagger



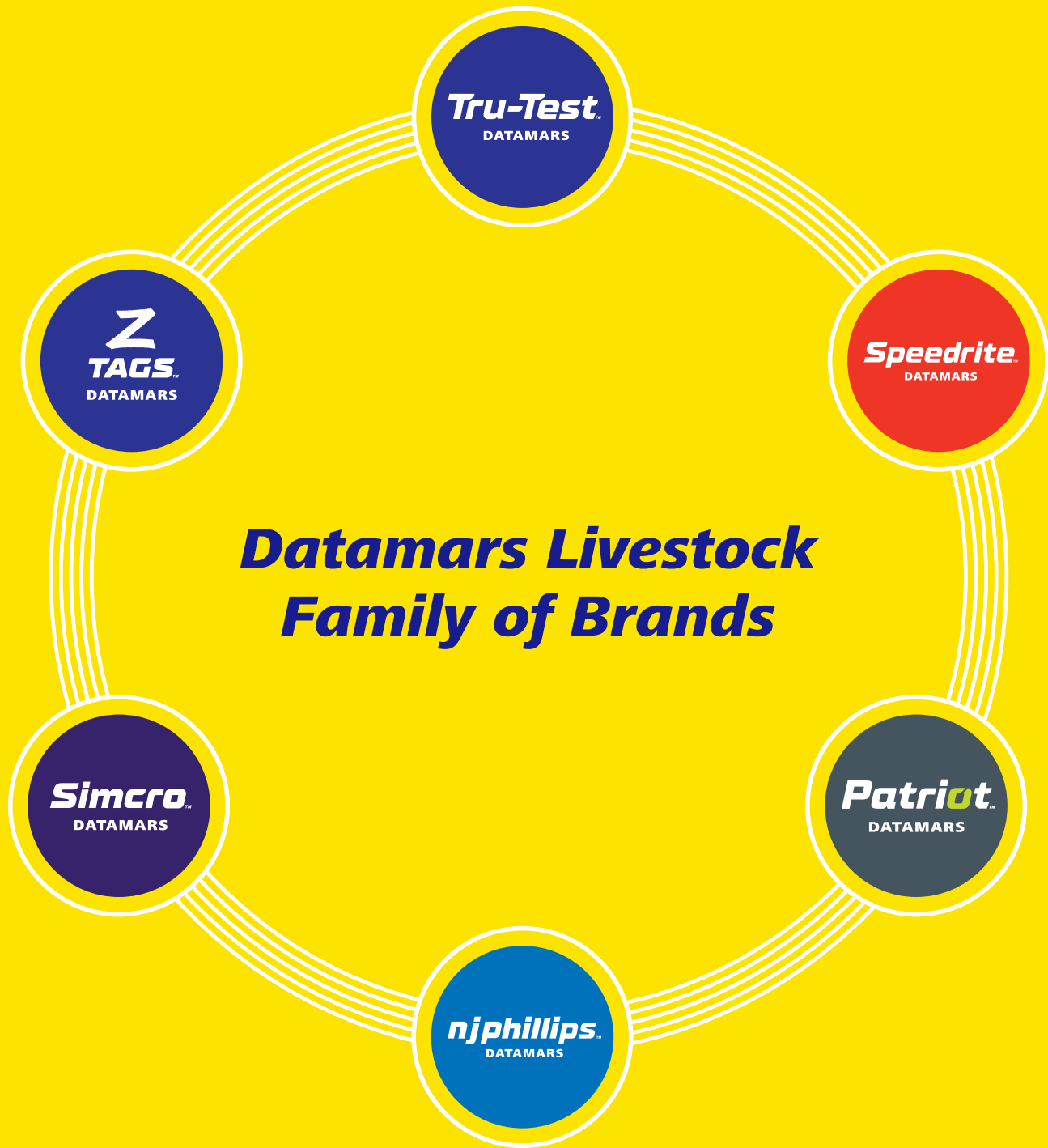
700 2300-063

Tag Marking Pen

- Apply two coats of ink to each Visual ID (VID) tag for high-quality result
- **For use on all VID tags**
- Quick-dry ink penetrates tag
- Easy-to-use
- Includes: (1) fine tip and (1) broad tip



700 2500-239



DATAMARS
Livestock



DatamarsLivestockNA



datamarslivestock_northamerica

Tru-Test, Z Tags, Temple Tag, Patriot, Speedrite and NJ Phillips are registered trademarks of Datamars, Inc. Although the information presented is believed to be accurate and reliable, no responsibility for inaccuracies can be assumed by Datamars, Inc. Performance data is typical only and variations due to component manufacturing tolerances are normal. Datamars, Inc. reserves the right at any time to change performance characteristics or specifications without prior notice. ©2024 Datamars, Inc. – All rights reserved.