

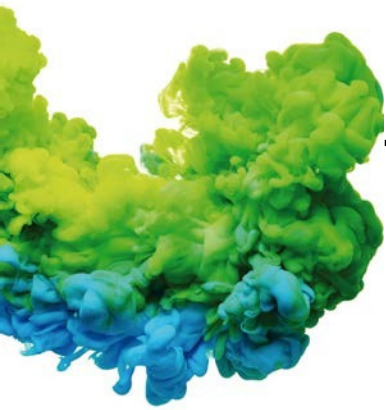


WINNING THE FUTURE THROUGH INNOVATION



Commercial washers

ECOVOLUTION
by DOMUS



The state-of-the-art in washing

Domus meets the needs of every customer. Our range of washers includes the most efficient features to reduce energy costs. The latest touchscreen control makes operation easier, attracts more customers, and increases the value of your laundry business.

TOUCH II

TOUCH II is the most advanced control on the market. Its new technology and large 7" touch screen will increase user satisfaction and attract new customers.

- ✔ **TOUCH II**, user friendly and totally programmable microprocessor with a 7" touch screen and 29 preset programs
- ✔ **USB Connection.** PC software free of charge for programming, traceability, data analysis...
- ✔ **IOT**
- ✔ **Wet cleaning ready**
- ✔ **Videos on display: ads, instructions** (useful for coin laundry)
- ✔ **37 languages**
- ✔ **8 dosing signals as standard + optional 6 extra dosing signals**



CONNECTIVITY

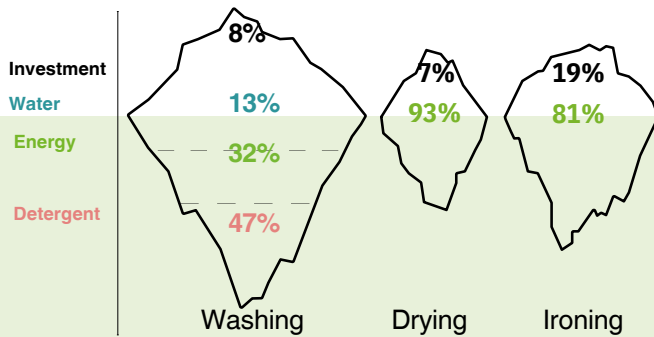
DOMUSCONNECT

TOUCH II evolves with DOMUS Connect: full remote control to ensure traceability, easy maintenance and business management features.

- ✔ **Remote technical service**
Machine monitoring, machine error warning, management for traceability and statistics. Remote desk and data recovery for technicians and maintenance, software update, etc.
- ✔ **Management for laundries: OPL and COIN**
Our DOMUS IoT solution allows you to manage your laundry business (i.e. create discount programs for customers, get statistics, traceability and laundry monitoring).



EFFICIENCY



Water

We offer washing machines with optimized designs and programming aimed at saving water. Our goals revolve around conserving water and utilizing it efficiently.



Energy

Our machines have been designed to achieve greater energy savings.



Chemicals

We design our washing machines with features to ensure the most accurate use of chemicals.



VERSATILITY

- ✓ **Make to order > Customization.**
Customize the machines from the factory with multiple available options
- ✓ **OPL <> Coin / Token**
OPL models are quickly transformable to vended with coin kits
- ✓ **Electric <> Hot water**
Effortlessly adjust the water heating from electric to hot water
- ✓ **Drain valve <> Pump**
Easily change the drainage from gravity valve to pump.
- ✓ **Wet cleaning**
All washers have all features to use wet cleaning programs

DOMUS washers are specially designed to work with coin laundry businesses.

G-FACTOR

DOMUS washer extractors, whether high, medium or normal spin, are the ones with the highest G-Factor in the market, which ensures minimum residual moisture, and this translates into less energy costs during the drying cycle.

High G-Factor reduces residual moisture and drying time



Coin / Token
All models are easily adjustable from OPL to COIN, simply by adding a coin kit.

Payment systems Open System
Domus equipment is prepared to work with any external payment system.



ERGONOMICS

As health and safety at work had become an important issue, our equipment is designed to be the most comfortable for users.

- ✓ **Large door diameters in the market**
Helpful, mainly for big capacity washers, for loading and unloading the garments
- ✓ **Easy opening/closing system for door lock**
- ✓ **Plinths available for 25 to 100 lb. models**
- ✓ **Reversible door**



Also, DOMUS washers are designed to work in coin laundry businesses.

MAINTENANCE

Easy access to parts

Washers are designed to offer an easy maintenance and reparability

Technical menu

Machine monitoring, machine error warning, management for traceability and statistics. Remote desk and data recovery for technicians and maintenance, software update, etc.

Equivalent parts

Most key parts are the same for all models

Hinged panel

Easy and ergonomic access to control panel parts

DOMUS washers require less maintenance and repair costs because they are made with high-quality components and parts, making your business easier.



DOMUS Product Range

HIGH SPIN



DHU

G FACTOR 500/350
HIGH SPIN RANGE

- ✓ Soft mounted washers, free standing
- ✓ **TOUCH II 7"** Fully programmable Touch Screen
- ✓ High extraction of water (45% residual humidity)
- ✓ **DOMUS Connect**
- ✓ Stainless Steel front & top panel (25 to 100Lb.)
- ✓ Full Stainless Steel exterior (135 to 275 Lb.)



LOW SPIN



DLU

G FACTOR 200/150

- ✓ **LOW SPIN RANGE**
- ✓ Hard mounted washers
- ✓ **DOMUS Connect**
- ✓ Stainless Steel front & top panels
- ✓ **TOUCH II 7"** Fully programmable Touch Screen
- ✓ Savings by to high extraction of water (65% residual humidity)



HEAVY PROFESSIONAL WASHERS



HPW

G FACTOR 450

- ✓ **HIGH SPIN RANGE**
- ✓ Soft mounted washers
- ✓ Short Washing Cycles
- ✓ Full Stainless Steel panels
- ✓ **TOUCH II 4.3"** Fully programmable Touch Screen **DOMUS Connect**



**HIGH SPIN WASHERS | G FACTOR 500****G FACTOR 450**

CONTROL TYPE	HEATING	CAPACITY.			G FACTOR 450		
		25 Lbs.	30 Lbs.	40 lbs.	50 lbs.	65 lbs.	80 lbs.
TOUCH II Programmable Control	E Electric HW Hot water S Steam	DHU-25 TOUCH II	DHU-30 TOUCH II	DHU-40 TOUCH II	DHU-50 TOUCH II	DHU-65 TOUCH II	DHU-80 TOUCH II

**HIGH SPIN WASHERS | G FACTOR 450****G FACTOR 350**

CONTROL TYPE	HEATING	CAPACITY.			G FACTOR 350	
		100 lbs.	135 lbs.	180 lbs.	230 lbs.	275 lbs.
TOUCH II Programmable Control	E Electric HW Hot water S Steam	DHU-100 TOUCH II	DHU-C 135 TOUCH II	DHU-180 TOUCH II	DHU-230 TOUCH II	DHU-275 TOUCH II

**LOW SPIN WASHERS | G FACTOR 200****G 150**

CONTROL TYPE	HEATING	CAPACITY.							G 150
		25 Lbs.	30 Lbs.	40 Lbs.	50 lbs.	65 lbs.	80 Lbs.	100 Lbs.	
TOUCH II Programmable Control	E Electric HW Hot water S Steam	DLU-25 TOUCH II	DLU-30 TOUCH II	DLU-40 TOUCH II	DLU-50 TOUCH II	DLU-65 TOUCH II	DLU-80C TOUCH II	DLU-100C TOUCH II	DLU-135 TOUCH II

**HEAVY PROFESSIONAL WASHERS | G FACTOR 500**

CONTROL TYPE	HEATING	CAPACITY.			
		20 Lbs.			25 Lbs.
TOUCH II Programmable Control	E Electric HW Hot water S Steam	Valve HPW-0820 TOUCH II V	Pump HPW-820 TOUCH II P	Valve HPW-1025 TOUCH II V	Pump HPW-1025 TOUCH II P

NOTE: All models can be easily converted to coin mode with a coin kit.
Open System: All models work with any external payment system (by multi-point data).



Since 1922 DOMUS offers quality and service to its distributors and importers in more than 150 countries around the world.



5610 McAdam Road, Mississauga, Ontario L4Z 1P1
905.890.1220 • 800.387.9503 • Fax: 905.890.7039
email: harco@harcoco.com • www.harcoco.com