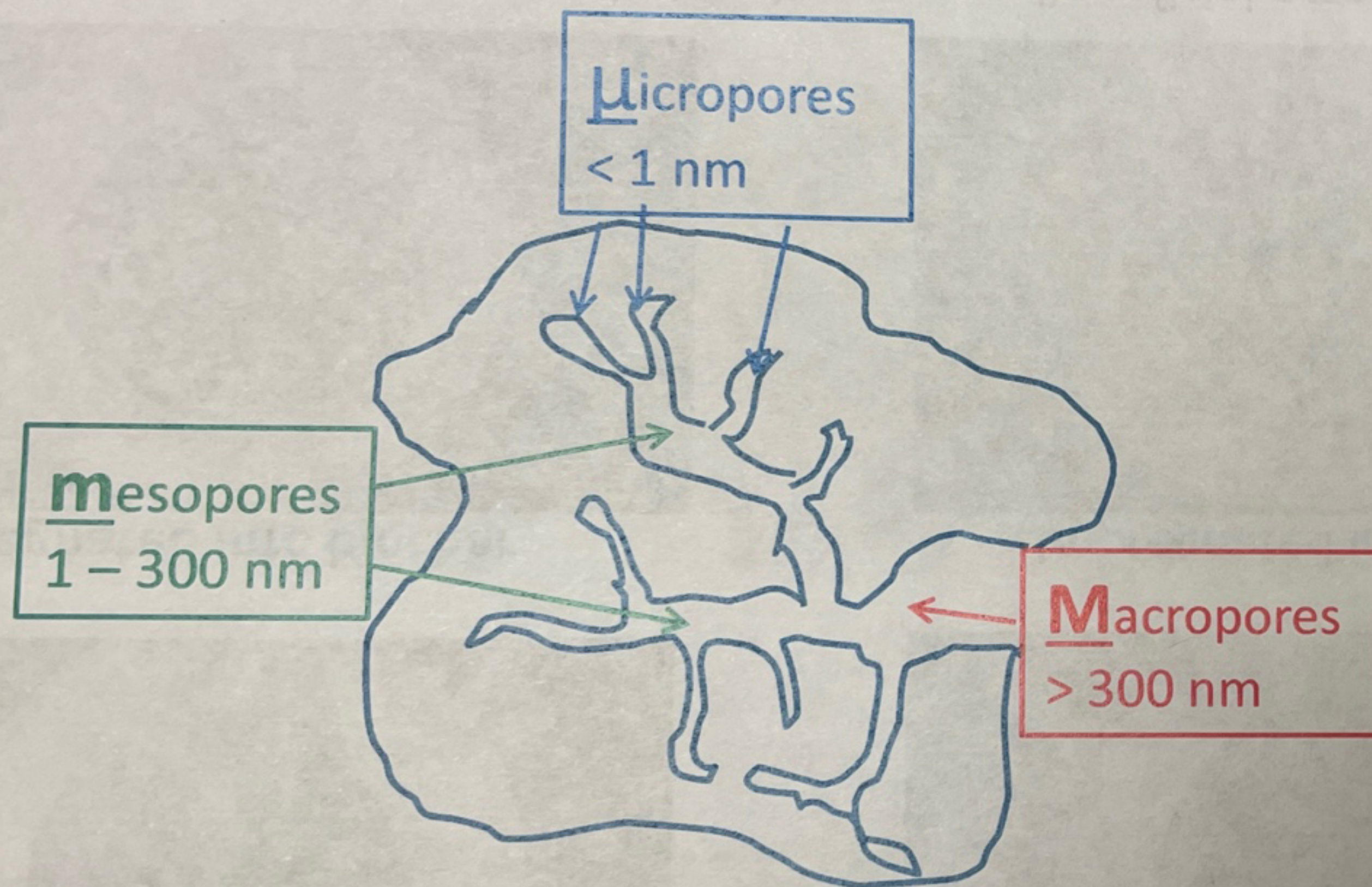


Relations between biochars porosity and incorporated species



Idealized biochar particle

Incorporated species	μ icro	m _e so	M _a cro
Air (CO ₂ , O ₂ , N ₂), CH ₄	yes	yes	yes
Water, solutions, organic nutrients		yes	yes
Microorganisms			yes

The **pores size** determines **what** could be incorporated into specific pores while the **pores volumes** determine **how much**