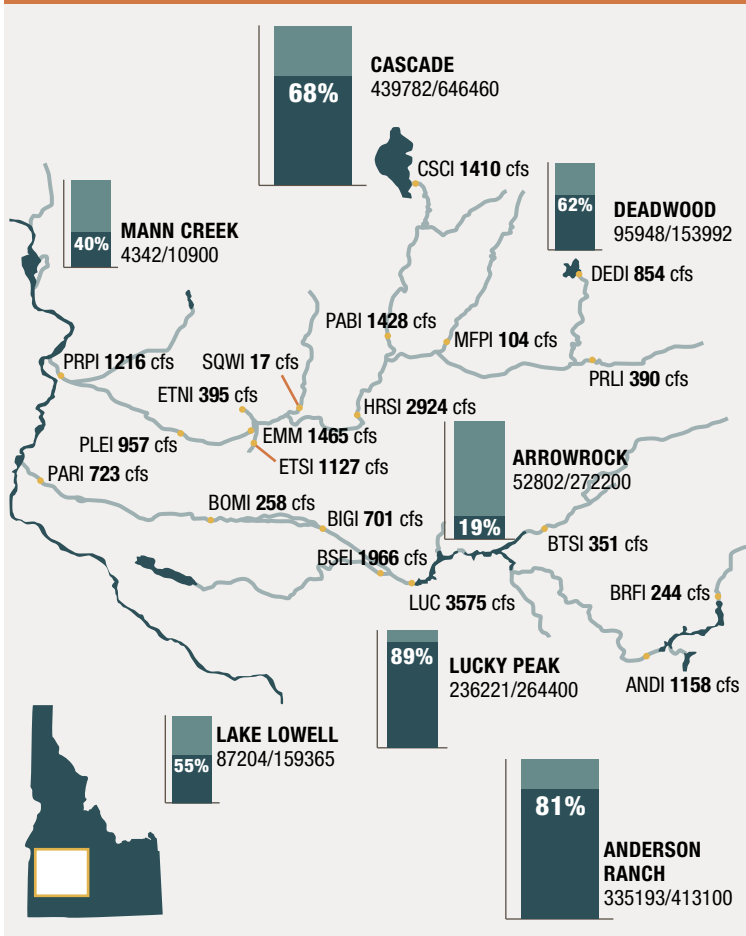


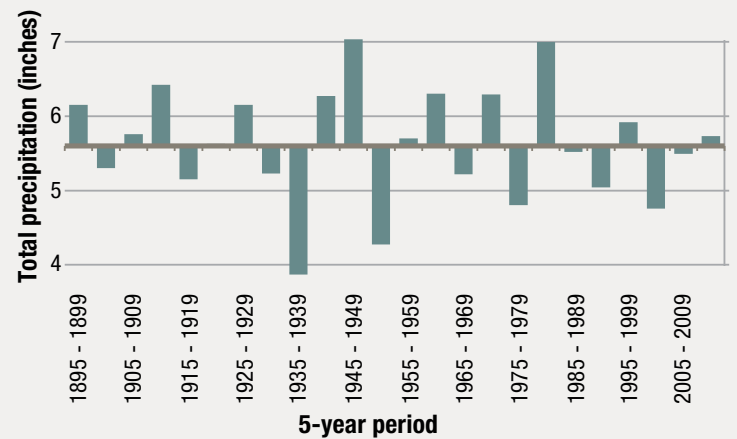
**Reservoir fill**

Boise and Payette River Basins



**Observed fall precipitation**

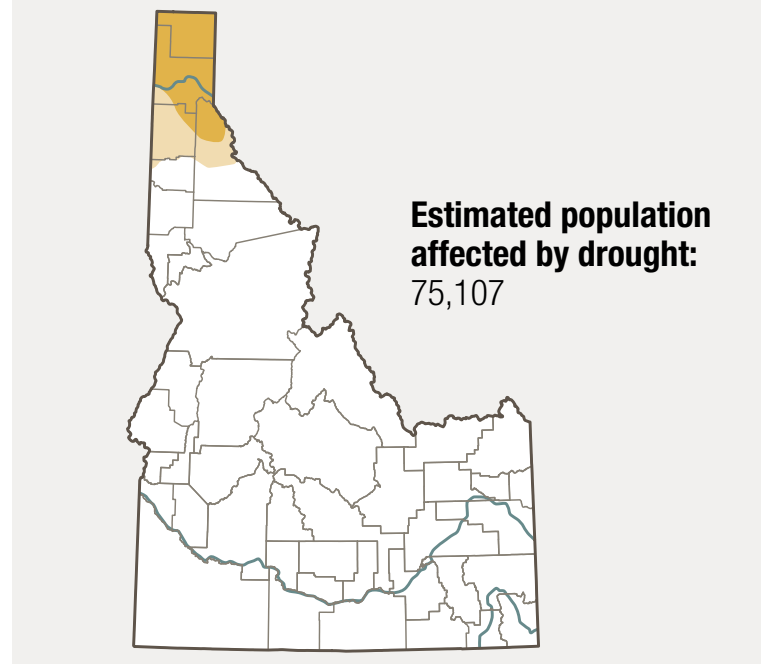
The observed fall precipitation for 1895 to 2014, averaged over five-year periods. These values are derived from the National Centers for Environmental Information's Climate Divisional Dataset.



Source: <https://statesummaries.ncics.org>

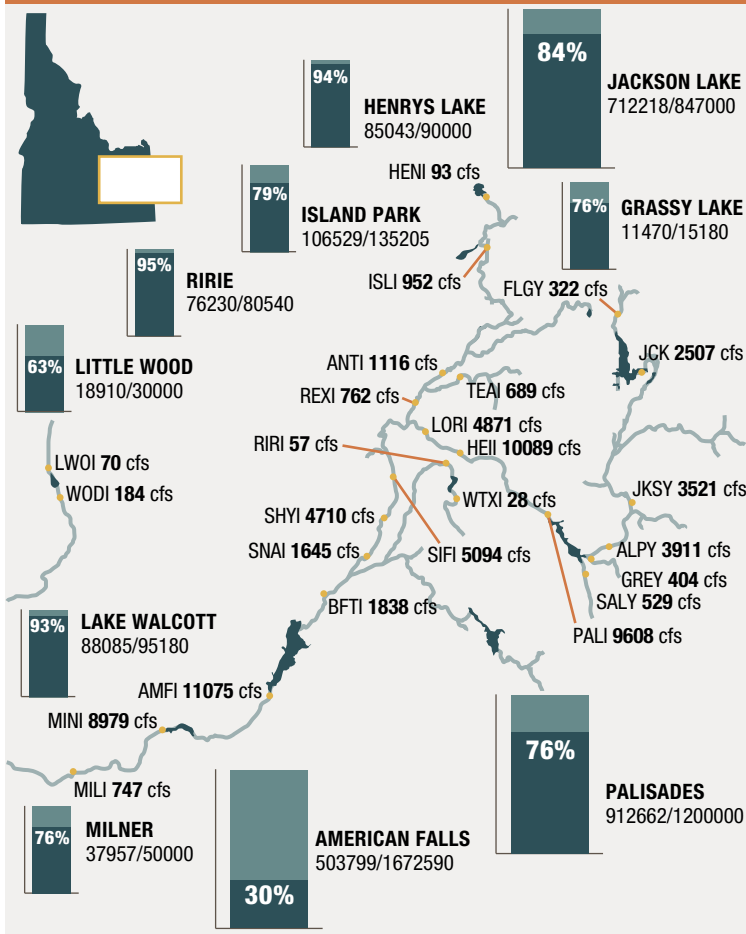
**Current U.S. drought monitor**

As of August 22, 2019



**Reservoir fill**

Upper Snake River Basin



**Water year graph for seven selected reservoirs**

(millions/acre-feet)

Selected reservoirs:

- Jackson Lake at dam on Snake River near Moran, WY
- Palisades Dam
- Ririe Dam and Lake on Willow Creek
- Grassy Lake near Moran, WY
- Island Park Dam and Reservoir on Henry's Fork
- American Falls Dam and Reservoir
- Minidoka Dam and Lake Walcott on Snake River

● August 2019: 2.39 ● High: 4.05 ● Low: 1.83

