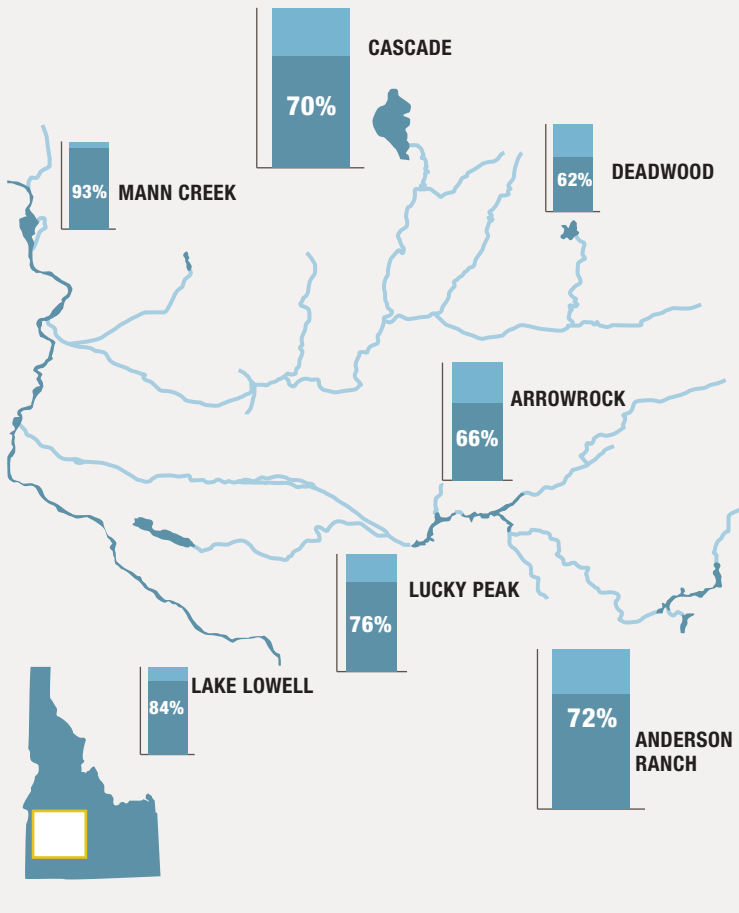


### Reservoir fill

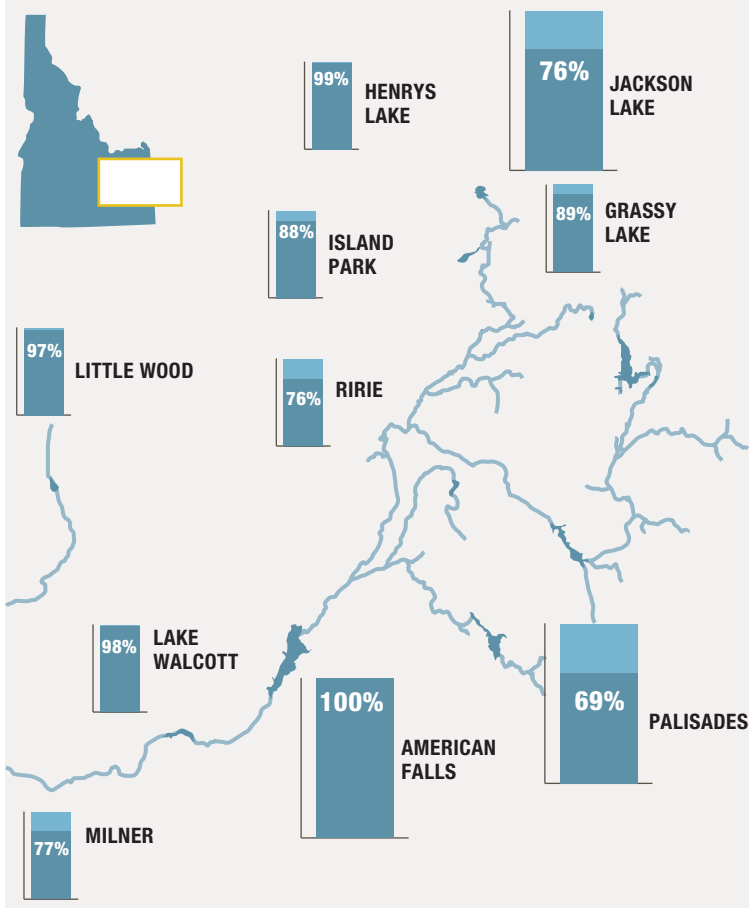
Boise and Payette River Basins



Source: U.S. Bureau of Reclamation

### Reservoir fill

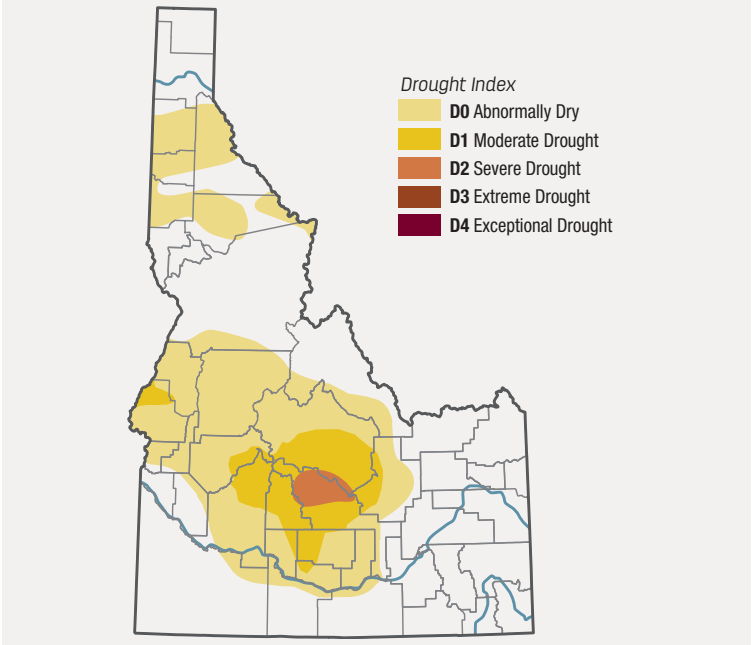
Upper Snake River Basin



Source: U.S. Bureau of Reclamation

### Current U.S. drought monitor

As of April 22, 2020



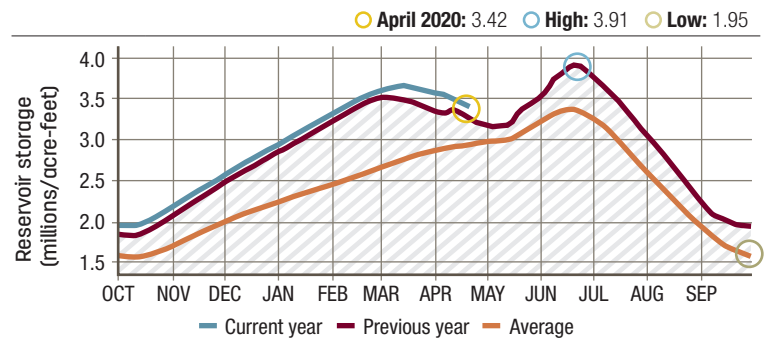
Source: National Drought Mitigation Center, University of Nebraska

### Water year graph for seven selected reservoirs

(millions/acre-feet)

Selected reservoirs:

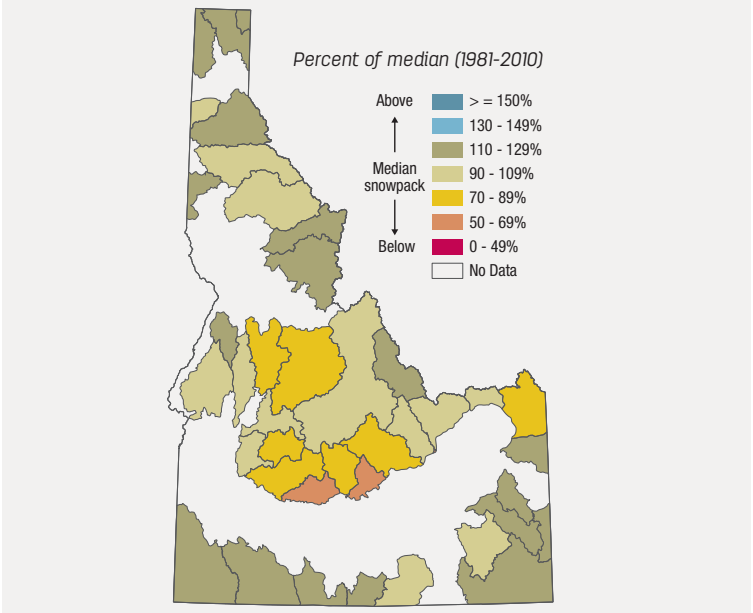
- Jackson Lake at dam on Snake River near Moran, WY
- Palisades Dam
- Ririe Dam and Lake on Willow Creek
- Grassy Lake near Moran, WY
- Island Park Dam and Reservoir on Henry's Fork
- American Falls Dam and Reservoir
- Minidoka Dam and Lake Walcott on Snake River



Source: U.S. Bureau of Reclamation

### Snowpack map

Percent of median snowpack, as of April 22, 2020



Source: USDA Natural Resources Conservation Service